

NAPOLEON, OHIO

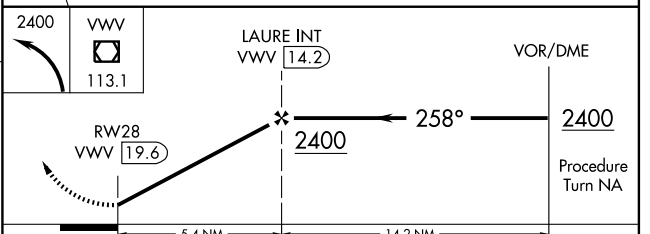
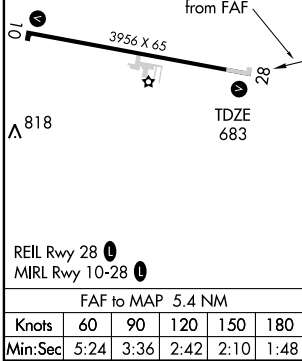
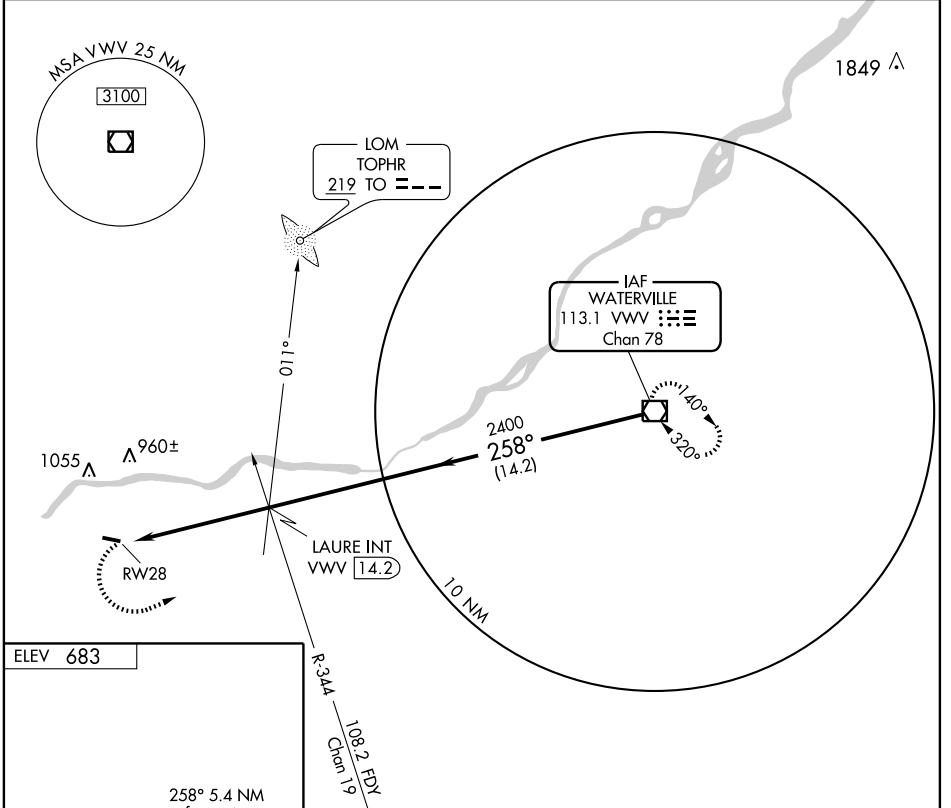
AL-6434 (FAA)

VOR/DME VVV 113.1 Chan 78	APP CRS 258°	Rwy Idg TDZE Apt Elev	3956 683 683
---	------------------------	-----------------------------	---

VOR or GPS RWY 28

NAPOLEON / HENRY COUNTY (7W5)

▲ NA Use Toledo altimeter setting.	MISSED APPROACH: Climbing left turn to 2400 direct VVV VOR/DME and hold.
TOLEDO APP CON 134.35 307.0	UNICOM 123.0 (CTAF) 0



CATEGORY	VOR/DME			
	A	B	C	D
S-28	1140-1	457 (500-1)	1140-1¼ 457 (500-1¼)	1140-1½ 457 (500-1½)
CIRCLING	1240-1	557 (600-1)	1240-1½ 557 (600-1½)	1420-2¼ 737 (800-2¼)

NAPOLEON, OHIO
Amdt 3A 06103

41°22'N - 84°04'W

VOR or GPS RWY 28

EC-2, 22 OCT 2009 to 19 NOV 2009

EC-2, 22 OCT 2009 to 19 NOV 2009