

HARRISON, OHIO

AL-6433 (FAA)

VORTAC CVG 117.3 Chan 120	APP CRS 171°	Rwy Idg TDZE Apt Elev	2583 584 584
---	------------------------	-----------------------------	---

VOR RWY 19

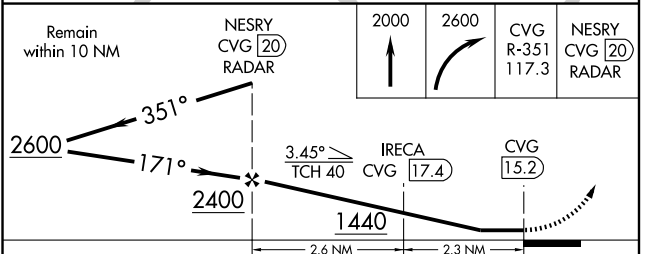
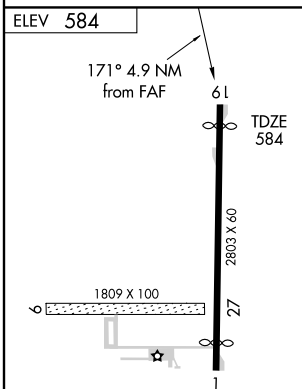
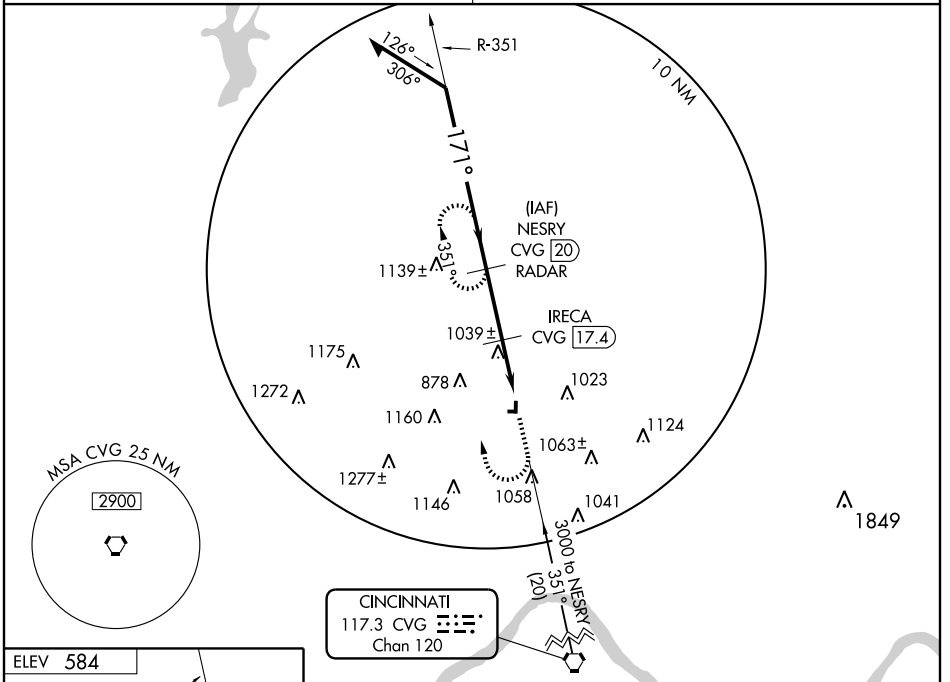
HARRISON/CINCINNATI WEST (I67)

▼ DME or RADAR required.
▲ NA Use Butler Co Rgnl altimeter setting, when not received, use Cincinnati/Northern Kentucky Intl altimeter setting and increase all MDA 40 feet, and S-19 Cat. A visibility ¼ mile.

MISSED APPROACH: Climb to 2000, then climbing right turn to 2600 via CVG VORTAC R-351 to NESRY/CVG 20 DME/RADAR and hold.

CINCINNATI APP CON
128.7 254.25

UNICOM
123.0 (CTAF)



CATEGORY	A	B	C	D
S-19	1440-1 856 (900-1)	1440-1¼ 856 (900-1¼)		NA
CIRCLING	1440-1 856 (900-1)	1440-1¼ 856 (900-1¼)		NA
IRECA FIX MINIMUMS				
S-19	1340-1 756 (800-1)	1340-1¼ 756 (800-1¼)		NA
CIRCLING	1340-1 756 (800-1)	1340-1¼ 756 (800-1¼)		NA

MIRL Rwy 1-19

FAF to MAP 4.9 NM

Knots	60	90	120	150	180
Min:Sec	4:54	3:16	2:27	1:58	1:38

HARRISON, OHIO
Amdt 4 09183

39°16'N - 84°46'W

HARRISON/CINCINNATI WEST (I67)
VOR RWY 19

EC-2, 22 OCT 2009 to 19 NOV 2009

EC-2, 22 OCT 2009 to 19 NOV 2009