

RNAV (GPS) RWY 22

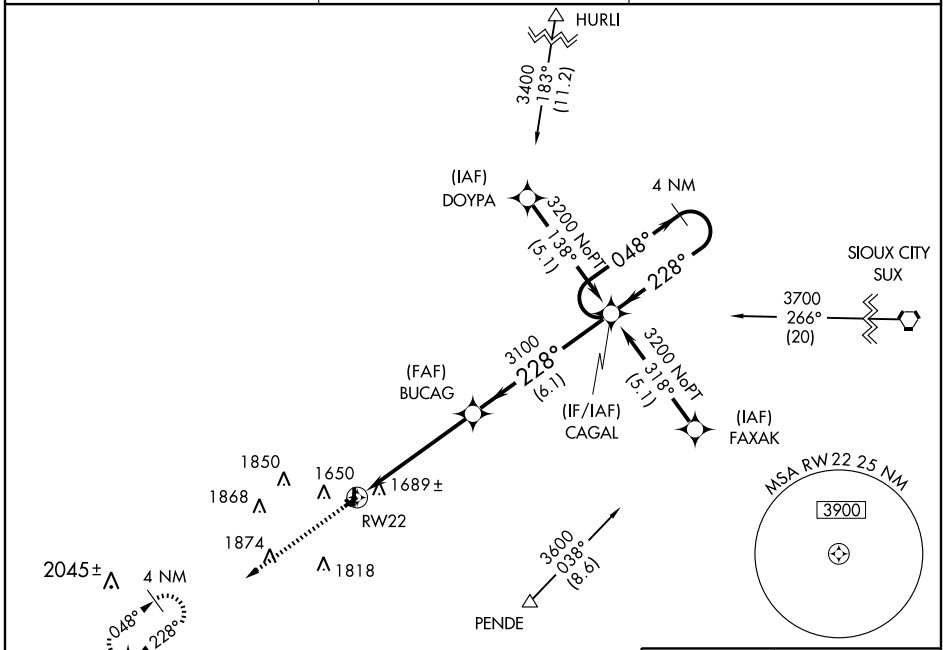
WAYNE MUNI (LCG)

| | |
|------------------------|---|
| APP CRS 228° | Rwy Idg 3406 TDZE 1430 Apt Elev 1431 |
|------------------------|---|

▼ When local altimeter setting not received, use Karl Stefan Memorial altimeter setting.
▲ NA DME/DME RNP-0,3 NA.

MISSED APPROACH: Climb to 3400 direct CEKAC WP and hold.

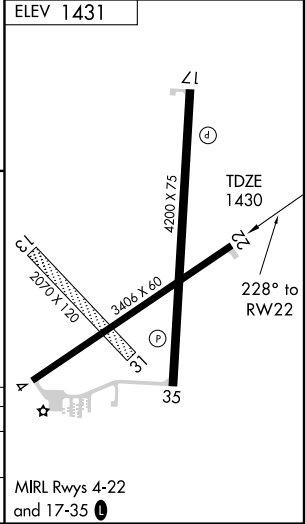
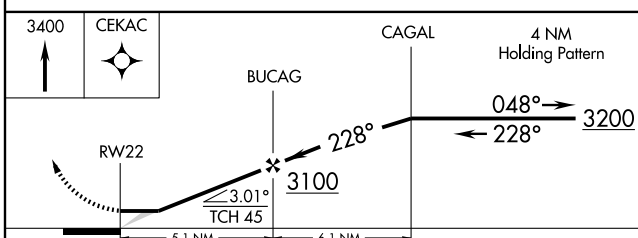
| | | |
|--------------------------|--|---------------------------------|
| AWOS-3 120.125 | SIOUX CITY APP CON * 124.6 307.0 | UNICOM 122.8 (CTAF) 0 |
|--------------------------|--|---------------------------------|



NC-2, 22 OCT 2009 to 19 NOV 2009

NC-2, 22 OCT 2009 to 19 NOV 2009

Procedure NA for arrival at SUX VORTAC via V100 eastbound.



| CATEGORY | A | B | C | D |
|----------|--------|-------------|----|---|
| LNVA MDA | 2020-1 | 590 (600-1) | NA | |
| CIRCLING | 2080-1 | 649 (700-1) | NA | |

MIRL Rwy 4-22 and 17-35 0