

WAYNE, NEBRASKA

AL-6431 (FAA)

WAAS CH <b>77513</b> <b>W17A</b>	APP CRS <b>175°</b>	Rwy Idg <b>4200</b> TDZE <b>1427</b> Apt Elev <b>1431</b>
--	------------------------	---

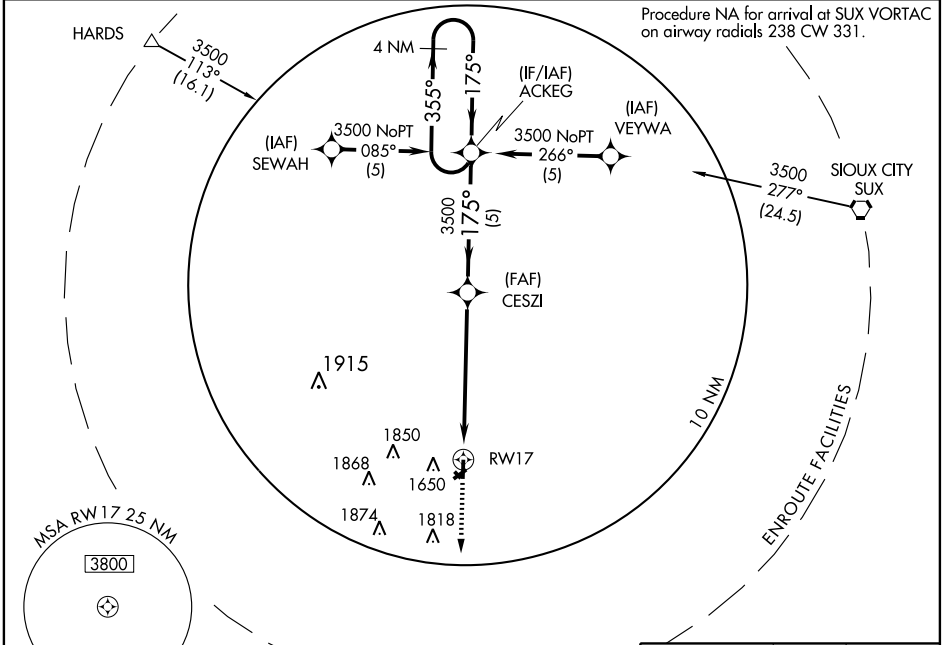
# RNAV (GPS) RWY 17

WAYNE MUNI (LCG)

**▼** BARO-VNAV NA below -17C (2F). DME/DME RNP 0.3 NA. If local altimeter setting not received; use Karl Stefan Memorial altimeter setting and increase all DAs/MDAs 80 feet. VDP NA when using Karl Stefan Memorial altimeter setting.

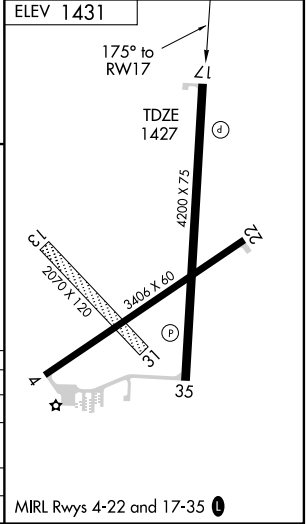
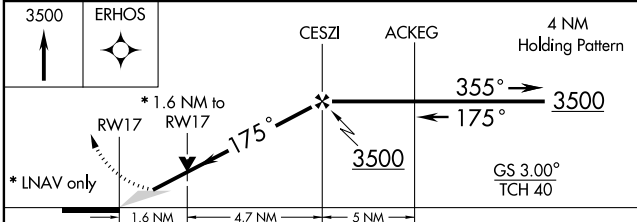
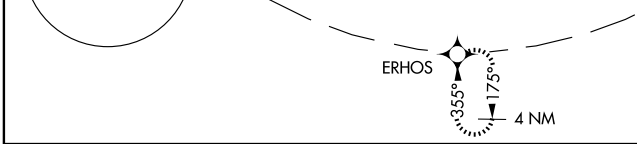
**▲ NA** MISSED APPROACH: Climb to 3500 direct ERHOS and hold.

AWOS-3 <b>120.125</b>	SIOUX CITY APP CON * <b>124.6 307.0</b>	UNICOM <b>122.8 (CTAF) 0</b>
--------------------------	--	---------------------------------



NC-2, 22 OCT 2009 to 19 NOV 2009

NC-2, 22 OCT 2009 to 19 NOV 2009



CATEGORY	A	B	C	D
LPV DA	1680-1	253 (300-1)		NA
LNAV/VNAV DA	1840-1½	413 (500-1½)		NA
LNAV MDA	1980-1	553 (600-1)		NA
CIRCLING	2000-1½	569 (600-1½)		NA

WAYNE, NEBRASKA  
Amdt1 09295

42°14'N-96°59'W

# WAYNE MUNI (LCG)

## RNAV (GPS) RWY 17