

WAYNE, NEBRASKA

AL-6431 (FAA)

NDB RWY 22

WAYNE MUNI (LCG)

NDB LCG	APP CRS	Rwy Idg	3406
389	239°	TDZE	1430
		Apt Elev	1431

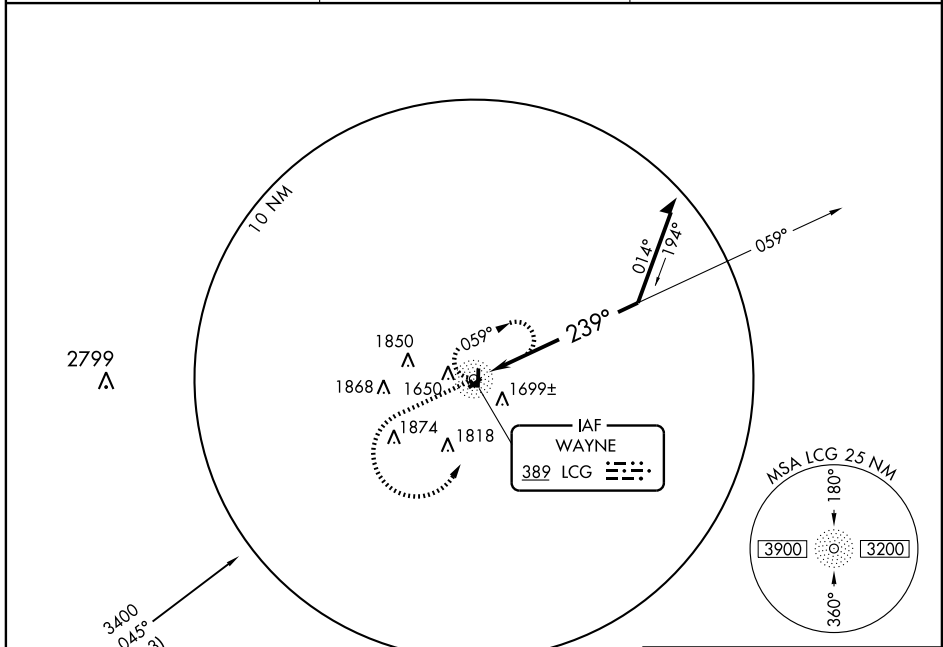
▽ When local altimeter setting not received, use Karl Stefan Memorial altimeter setting.
⚠ NA

MISSED APPROACH: Climb to 3400 then left turn direct LCG NDB and hold.

AWOS-3
120.125

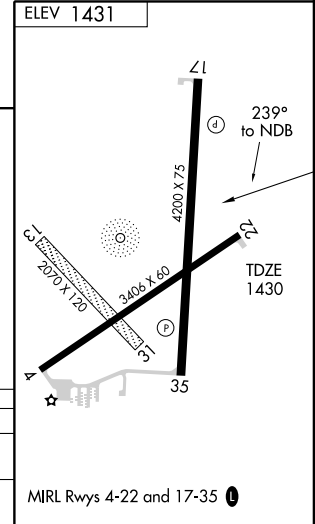
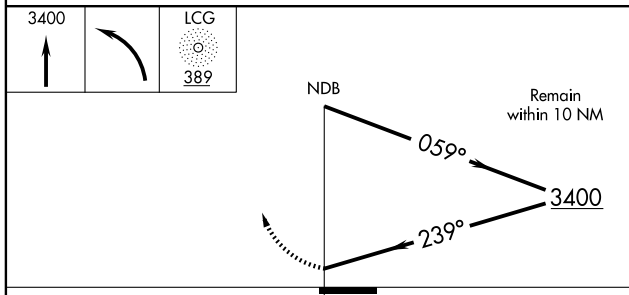
SIoux CITY APP CON ★
124.6 307.0

UNICOM
122.8 (CTAF) 0



NC-2, 22 OCT 2009 to 19 NOV 2009

NC-2, 22 OCT 2009 to 19 NOV 2009



CATEGORY	A	B	C	D
S-22	2140-1	710 (800-1)		NA
CIRCLING	2140-1	709 (800-1)		NA

WAYNE, NEBRASKA
Orig-A 09295

42°14'N-96°59'W

WAYNE MUNI (LCG)

NDB RWY 22