

DUMAS, TEXAS

AL-6429 (FAA)

APP CRS **106°**
 Rwy Idg **N/A**
 TDZE **N/A**
 Apt Elev **3705**

VOR/DME-A
 DUMAS/MOORE COUNTY (DUX)

Obtain local altimeter on CTAF; when not received, use Amarillo altimeter setting. When neither received, procedure not authorized.
▲ NA

MISSED APPROACH: Climb to 6000 then turn left direct DHT VORTAC and hold.

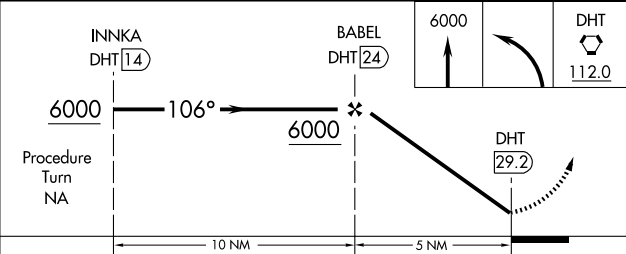
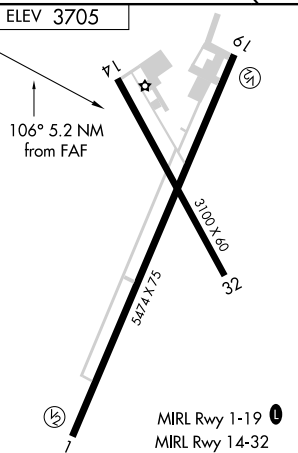
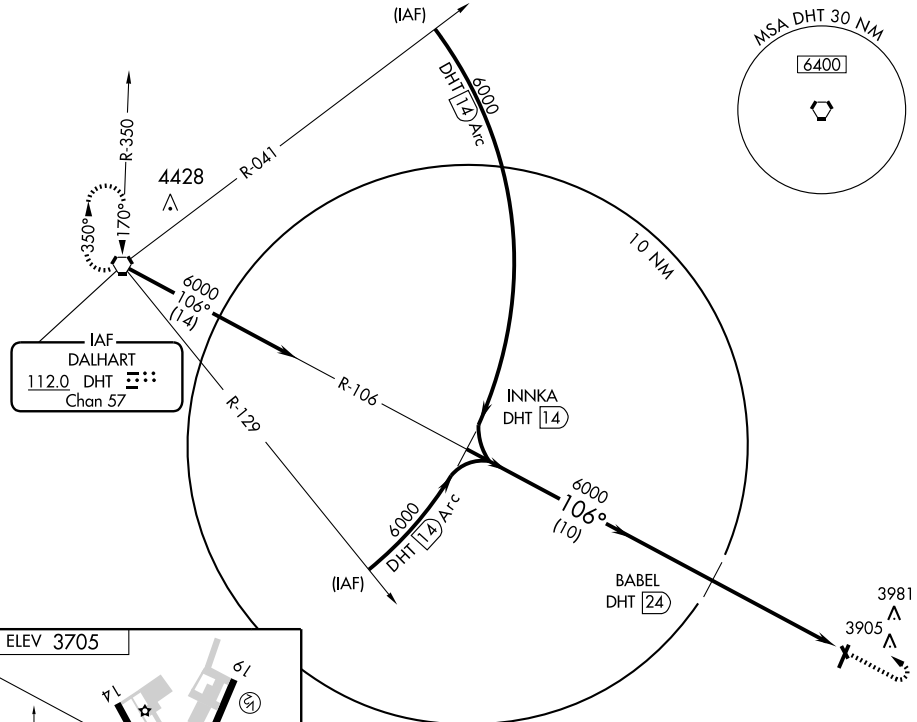
AWOS-3
118.075

ALBUQUERQUE CENTER
127.85 285.475

UNICOM
122.8 (CTAF)

SC-2, 22 OCT 2009 to 19 NOV 2009

SC-2, 22 OCT 2009 to 19 NOV 2009



CATEGORY	A	B	C	D
CIRCLING	4700-1¼ 995 (1000-1½)	4700-1½ 995 (1000-1½)	4700-3	995 (1000-3)
AMARILLO ALTIMETER SETTING MINIMUMS				
CIRCLING	4820-1¼ 1115 (1200-1½)	4820-1½ 1115 (1200-1½)	4820-3	1115 (1200-3)

DUMAS, TEXAS
 Amdt 6 08045

35°51'N-102°01'W

DUMAS/MOORE COUNTY (DUX)
VOR/DME-A