

MONTE VISTA, COLORADO

AL-6427 (FAA)

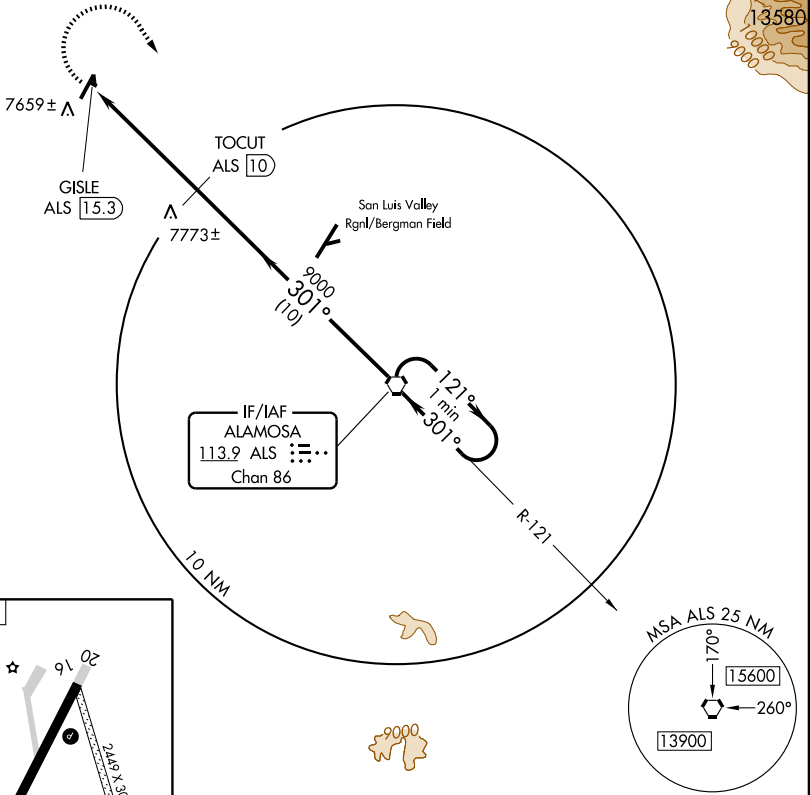
VORTAC ALS <b>113.9</b> Chan <b>86</b>	APP CRS <b>301°</b>	Rwy Idg TDZE Apt Elev <b>N/A</b> <b>N/A</b> <b>7611</b>
--	------------------------	--

**VOR/DME-A**  
MONTE VISTA MUNI (MVI)

<b>NA</b> Circling to Rwy 10-28 and Rwy 16-34 NA. Use Alamosa altimeter setting.	MISSED APPROACH: Climbing right turn to 10700 direct ALS VORTAC and hold.
---	--

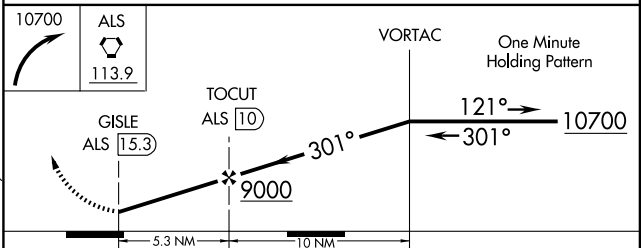
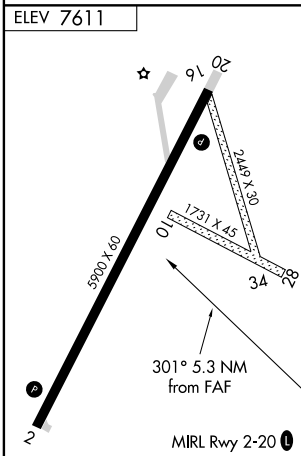
ALAMOSAS ASOS <b>135,175</b>	DENVER CENTER <b>128,375 379,95</b>	UNICOM <b>122.8 (CTAF)</b>
---------------------------------	--	-------------------------------

NoPT for arrival on ALS VORTAC airway radials 061 CW 240.



SW-1, 22 OCT 2009 to 19 NOV 2009

SW-1, 22 OCT 2009 to 19 NOV 2009



CATEGORY	A	B	C	D
Knots	60	90	120	150
Min:Sec				
CIRCLING	8020-1 409 (500-1)	8080-1 469 (500-1)	8080-1 ½ 469 (500-1½)	8180-2 569 (600-2)

MONTE VISTA, COLORADO  
Amdt 3 08045

37°32'N-106°03'W

MONTE VISTA MUNI (MVI)  
**VOR/DME-A**