

MONTE VISTA, COLORADO

AL-6427 (FAA)

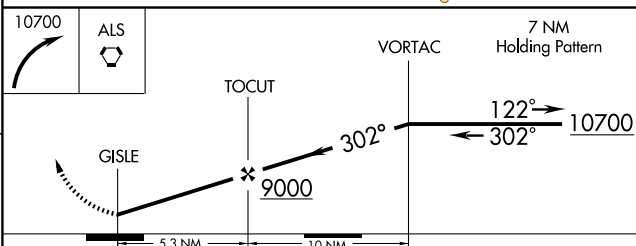
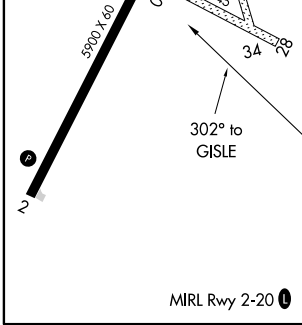
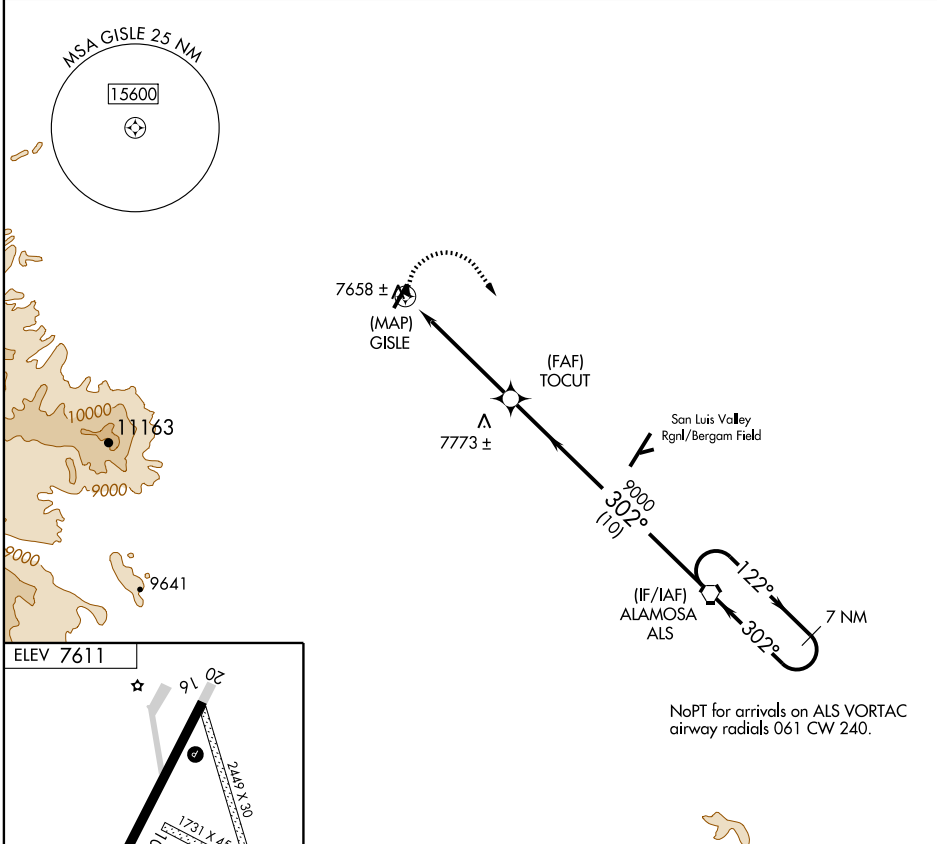
RNAV (GPS)-B
MONTE VISTA MUNI (MVI)

APP CRS 302°	Rwy Idg TDZE Apt Elev	N/A N/A 7611
------------------------	-----------------------------	---

NA Use Alamosa altimeter setting. Circling to RWY 10-28 and RWY 16-34 NA. DME/DME RNP-0.3 NA.

MISSED APPROACH: Climbing right turn to 10700 direct ALS VORTAC and hold.

ALAMOSAS ASOS 135.175	DENVER CENTER 128.375 379.95	UNICOM 122.8 (CTAF) 0
---------------------------------	--	---------------------------------



CATEGORY	A	B	C	D
CIRCLING	8020-1 409 (500-1)	8080-1 469 (500-1)	8080-1 ½ 469 (500-1½)	8180-2 569 (600-2)

MONTE VISTA, COLORADO
Orig 08045

37°32'N-106°03'W

MONTE VISTA MUNI (MVI)
RNAV (GPS)-B

SW-1, 22 OCT 2009 to 19 NOV 2009

SW-1, 22 OCT 2009 to 19 NOV 2009