

WILLIAMSBURG, VIRGINIA

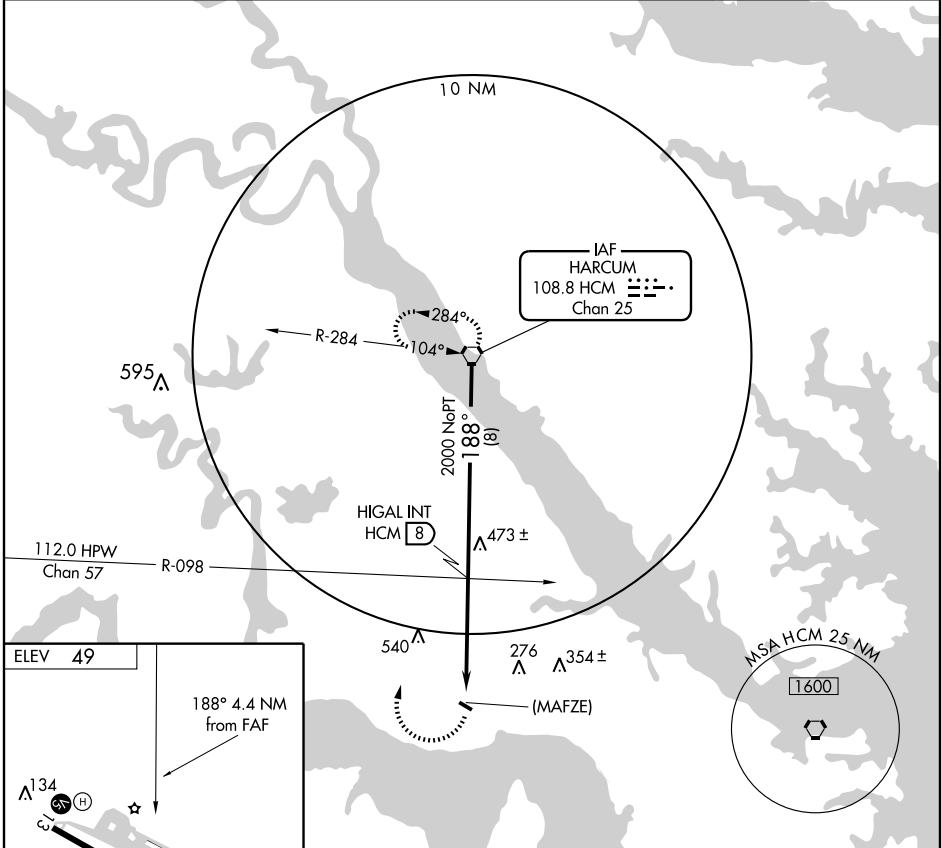
AL-6425 (FAA)

VORTAC HCM 108.8 Chan 25	APP CRS 188°	Rwy Idg TDZE Apt Elev	N/A N/A 49
---------------------------------------	------------------------	-----------------------------	---------------------------------------

VOR or GPS-B
WILLIAMSBURG-JAMESTOWN (JGG)

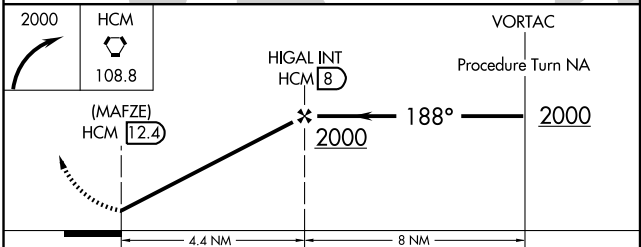
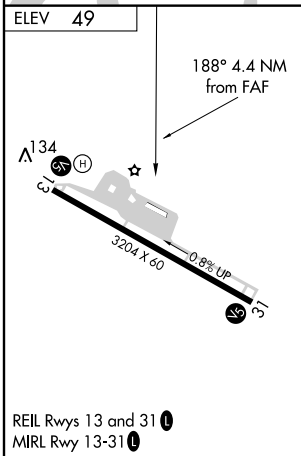
<p>▼ Use Newport News/Williamsburg Intl altimeter setting.</p> <p>▲ NA</p>	MISSED APPROACH: Climbing right turn to 2000 direct HCM VORTAC and hold.
--	--

AWOS-3 120.625	NORFOLK APP CON 119.45 360.6	GCO 135.075	UNICOM 122.8 (CTAF) 0
--------------------------	--	-----------------------	--



NE-3, 22 OCT 2009 to 19 NOV 2009

NE-3, 22 OCT 2009 to 19 NOV 2009



FAF to MAP 4.4 NM					
Knots	60	90	120	150	180
Min:Sec	4:24	2:56	2:12	1:46	1:28
CATEGORY	A	B	C	D	
CIRCLING	680-1 631 (700-1)		680-1 631 (700-1 3/4)		NA

WILLIAMSBURG, VIRGINIA
Amdt 2 03191

37°14'N - 76°43'W

WILLIAMSBURG-JAMESTOWN (JGG)
VOR or GPS-B