

RNAV (GPS) RWY 27

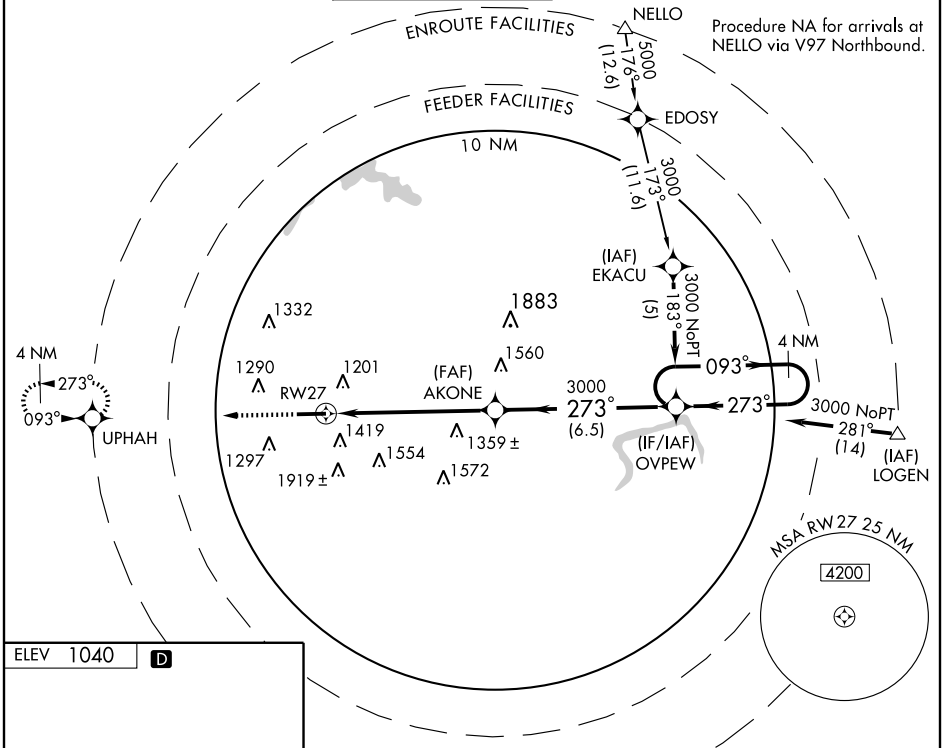
ATLANTA/COBB COUNTY-McCOLLUM FIELD (RYY)

WAAS CH 97308 W27A	APP CRS 273°	Rwy Idg TDZE 1011 Apt Elev 1040	5405 1011 1040
--	------------------------	---	---

DME/DME RNP-0.3 NA. VDP NA when using Hartsfield-Jackson Atlanta Intl altimeter setting. When local altimeter setting not received, use Hartsfield-Jackson Atlanta Intl altimeter setting and increase all DA/MDA 60 feet and LPV all Cats. and Circling Cat. B and C visibilities ¼ mile.

MISSED APPROACH: Climb to 3000 direct UPAH and hold.

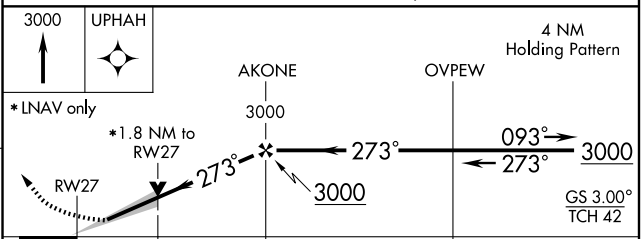
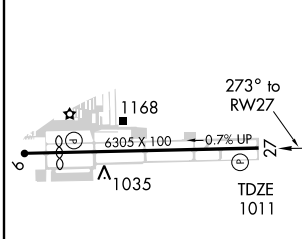
ATIS 128.125	ATLANTA APP CON 121.0 268.7	McCOLLUM TOWER * 125.9 (CTAF) 0	GND CON 119.0	CLNC DEL 119.0 268.7	UNICOM 122.7
------------------------	---------------------------------------	---	-------------------------	--------------------------------	------------------------



SE-4, 22 OCT 2009 to 19 NOV 2009

SE-4, 22 OCT 2009 to 19 NOV 2009

ELEV 1040	D
-----------	----------



CATEGORY	A	B	C	D
LPV DA	1211-¾ 200 (200-¾)			
LNAV MDA	1620-1 609 (600-1)	1620-1¾ 609 (600-1¾)		1620-2 609 (600-2)
CIRCLING	1780-1 740 (800-1)	1780-2 740 (800-2)		2220-3 1180 (1200-3)

REIL Rwy 27 **0**
HIRL Rwy 9-27 **0**

RNAV (GPS) RWY 27