

RNAV (GPS) RWY 8

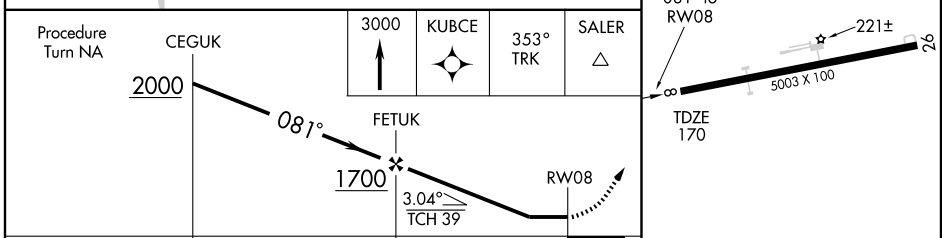
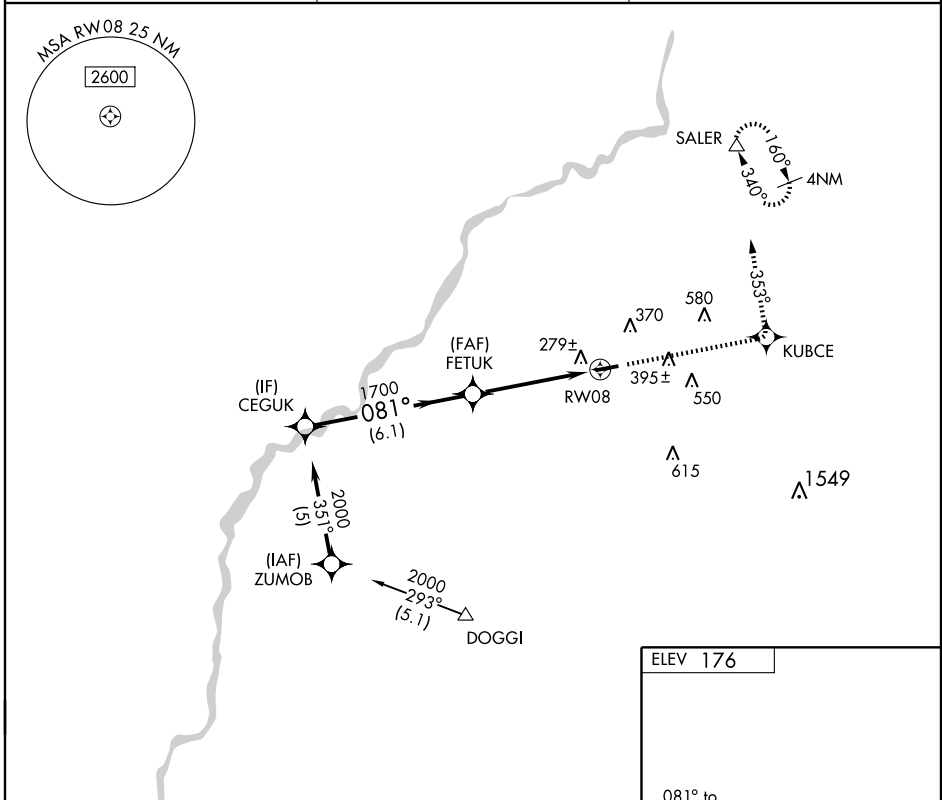
CAMILLA-MITCHELL COUNTY (CXU)

APP CRS	Rwy Idg	5003
081°	TDZE	170
	Apt Elev	176

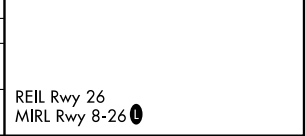
NA DME/DME RNP-0.3 NA. Visibility reduction by helicopters NA. When local altimeter setting not received, use Albany altimeter setting and increase all MDA 60 feet, and LNAV Cats. C and D, and Circling Cat. C visibility ¼ mile.

MISSED APPROACH: Climb to 3000 direct KUBCE and via 353° track to SALER and hold.

AWOS-A 369	JACKSONVILLE CENTER 125.75 226.8	UNICOM 122.8 (CTAF) 0
----------------------	--	---------------------------------



CATEGORY	A	B	C	D
LNAV MDA	540-1 370 (400-1)		540-1½ 370 (400-1½)	
CIRCLING	720-1	544 (600-1)	760-1½ 584 (600-1½)	760-2 584 (600-2)



SE-4, 22 OCT 2009 to 19 NOV 2009

SE-4, 22 OCT 2009 to 19 NOV 2009

REIL Rwy 26
MIRL Rwy 8-26 0