

CAMILLA, GEORGIA

AL-6423 (FAA)

# RNAV (GPS) RWY 26

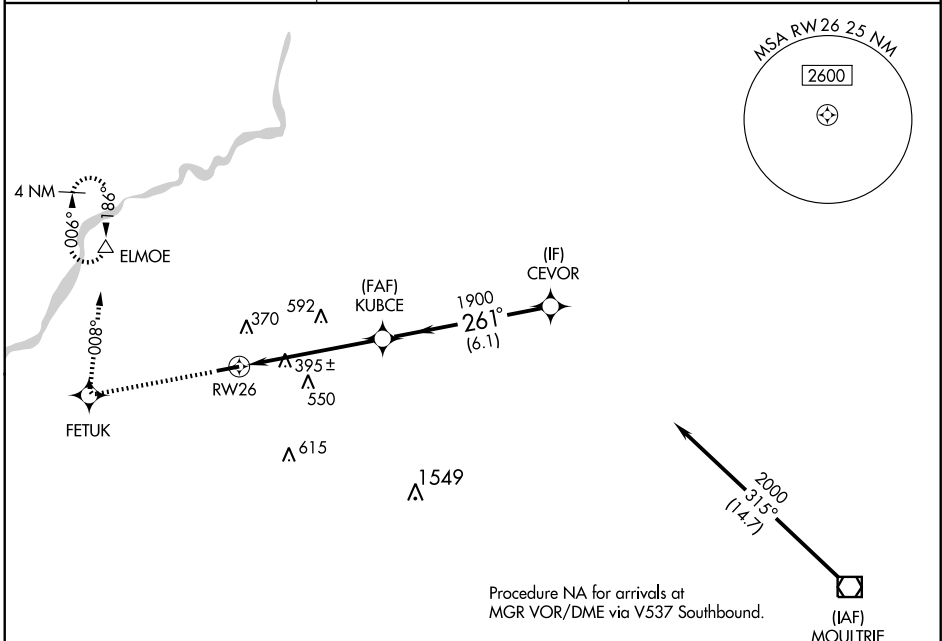
CAMILLA-MITCHELL COUNTY (CXU)

APP CRS <b>261°</b>	Rwy Idg <b>5003</b>
	TDZE <b>176</b>
	Apt Elev <b>176</b>

**NA** DME/DME RNP-0.3 NA. Visibility reduction by helicopters NA.  
When local altimeter setting not received, use Albany altimeter setting and increase all MDA 60 feet, and increase LNAV and Circling Cats. B/C/D ¼ mile.

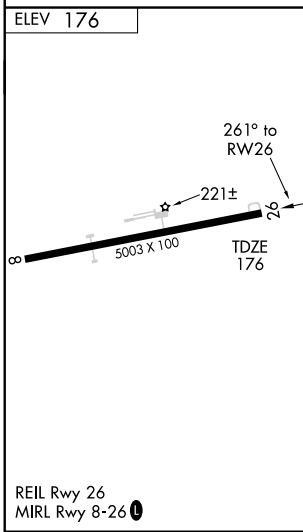
**MISSED APPROACH:** Climb to 2000 direct FETUK and right turn via 008° track to ELMOE and hold.

AWOS-A <b>369</b>	JACKSONVILLE CENTER <b>125.75 226.8</b>	UNICOM <b>122.8 (CTAF) 0</b>
----------------------	--	---------------------------------



SE-4, 22 OCT 2009 to 19 NOV 2009

SE-4, 22 OCT 2009 to 19 NOV 2009



2000	FETUK	008° TRK	ELMOE	CEVOR	Procedure Turn NA
			KUBCE	2000	
			1900		
			3.04° TCH 39°		
			5.2 NM	6.1 NM	
CATEGORY	A	B	C	D	
LNAV MDA	860-1	684 (700-1)	860-2 684 (700-2)	860-2¼ 684 (700-2¼)	
CIRCLING	860-1	684 (700-1)	860-2 684 (700-2)	860-2¼ 684 (700-2¼)	

CAMILLA, GEORGIA  
Orig 09127

31°13'N-84°14'W

# CAMILLA-MITCHELL COUNTY (CXU)

## RNAV (GPS) RWY 26