

CAMILLA, GEORGIA

AL-6423 (FAA)

NDB RWY 8

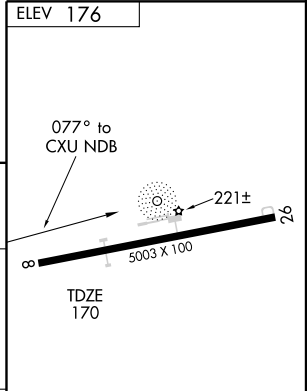
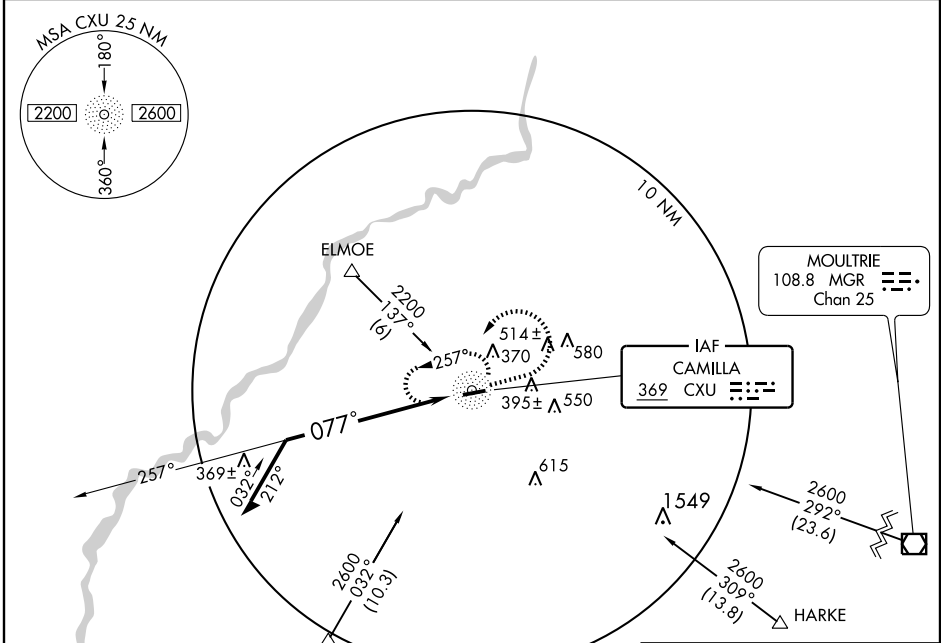
CAMILLA-MITCHELL COUNTY (CXU)

NDB CXU 369	APP CRS 077°	Rwy Idg 5003
		TDZE 170
		Apt Elev 176

NA When local altimeter setting not received, use Albany altimeter setting and increase all MDAs 60 feet, increase S-8 Cats. C and D visibility 1/4 mile and Circling Cat. C 1/4 mile.

MISSED APPROACH: Climb to 1900 then climbing left turn to 2200 direct CXU NDB and hold.

AWOS-A 369	JACKSONVILLE CENTER 125.75 226.8	UNICOM 122.8 (CTAF) 0
----------------------	--	---------------------------------



CATEGORY	A	B	C	D
S-8	720-1	550 (600-1)	720-1½ 550 (600-1½)	720-1¾ 550 (600-1¾)
CIRCLING	720-1	544 (600-1)	760-1½ 584 (600-1½)	760-2 584 (600-2)

REIL Rwy 26
MIRL Rwy 8-26 0

SE-4, 22 OCT 2009 to 19 NOV 2009

SE-4, 22 OCT 2009 to 19 NOV 2009

CAMILLA, GEORGIA
Amdt 2 09127

31°13'N-84°14'W

CAMILLA-MITCHELL COUNTY (CXU)
NDB RWY 8