

SL-6422 [USA]

MUIR GND CON
121.625 265.6
MUIR TOWER ★
126.2 (CTAF) 241.0
HARRISBURG DEP CON
118.25 269.45

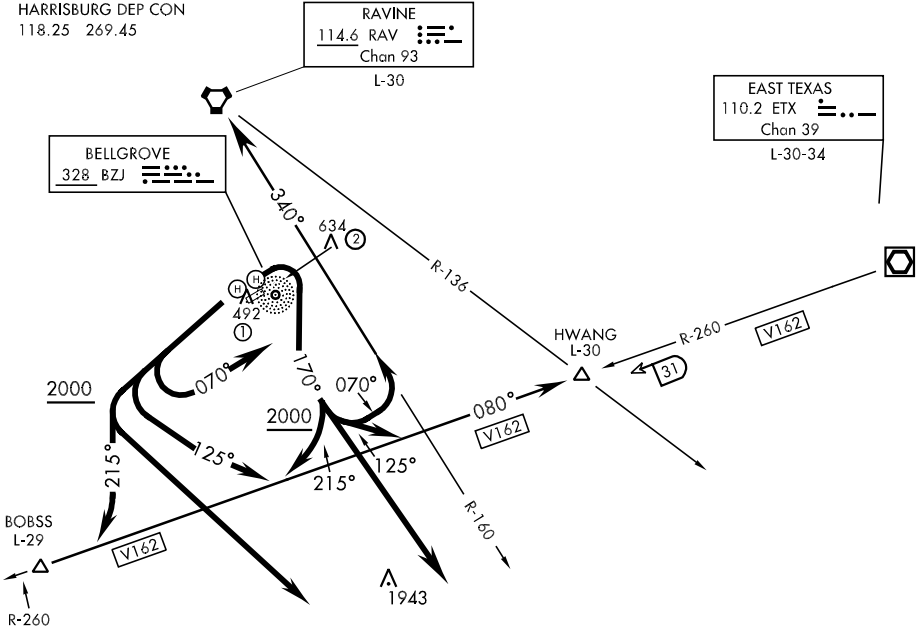
RAVINE
114.6 RAV
Chan 93
L-30

EAST TEXAS
110.2 ETX
Chan 39
L-30-34

BELLS GROVE
328 BZJ
L-30

HWANG
L-30

LANCASTER
117.3 LRP
Chan 120
L-34



CAUTION: 1300' ridge running SW to NE
1 mile NE Rwy 7-25.

- ① Located on arpt SW end of Rwy 25
- ② Located 3/8 mi NE of Rwy 7

Chart not to scale

NE-4, 22 OCT 2009 to 19 NOV 2009

NE-4, 22 OCT 2009 to 19 NOV 2009

DEPARTURE ROUTE DESCRIPTION

DEPARTURE EAST PAD: Fly heading 070° with climbing right turn as soon as practicable to 2000 via 170° bearing from BZJ NDB. Thence via (transition) or (assigned route) to 3000. Expect clearance to assigned altitude ten minutes after departure.

DEPARTURE WEST PAD: Fly heading 240° to 2000. Thence via (transition) or (assigned route) to 3000. Expect clearance to assigned altitude ten minutes after departure.

BOBSS TRANSITION (MUI3.BOBSS): Fly heading 215° to intercept V162 to BOBSS INTERSECTION.

HWANG TRANSITION (MUI3.HWANG): Fly heading 125° to intercept V162 to HWANG INTERSECTION.

LANCASTER TRANSITION (MUI3.LRP): Proceed direct to LRP VORTAC.

RAVINE TRANSITION (MUI3.RAV): Turn left heading 070° to intercept the RAV R-160. Thence via RAV R-160 to RAVINE VORTAC.