

COPTER RNAV (GPS) RWY 25

AL-6422 [USA]

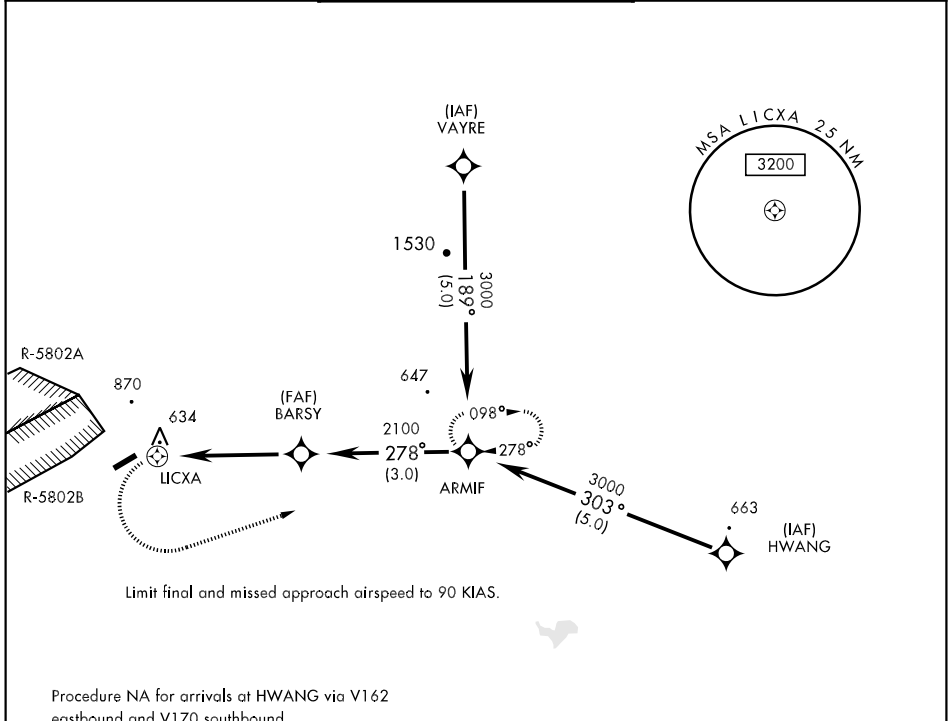
MUIR AAF (KMUI)

APCH CRS	Rwy ldg	3867
278°	TDZE	488
	Arpt Elev	488

⚠ When local altimeter setting not received, use Harrisburg INTL altimeter setting and increase MDA 80 feet.
 ⚠ DME/DME RNP-0.3 NA.

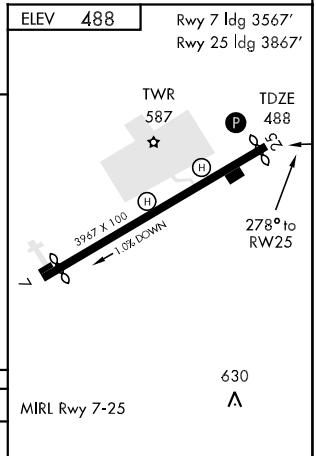
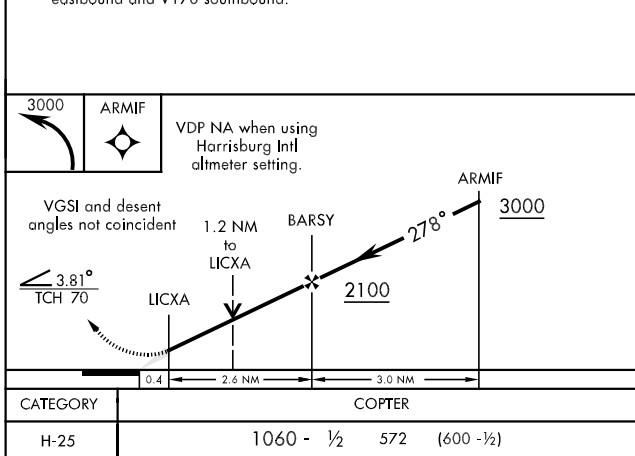
MISSED APPROACH: Climbing left turn to 3000 direct ARMIF WPT and hold.

HARRISBURG APP CON 118.25 269.45	MUIR TOWER ★ 126.2 (CTAF) 0 241.0	GND CON 121.625 265.6
-------------------------------------	--------------------------------------	--------------------------



NE-4, 22 OCT 2009 to 19 NOV 2009

NE-4, 22 OCT 2009 to 19 NOV 2009



COPTER RNAV (GPS) RWY 25