

NDB BZJ 328	APCH CRS 289°	Rwy ldg TDZE Arpt Elev	N/A N/A 488	AL-6422 [USA]	MUIR AAF (KMUI)
-----------------------	-------------------------	---------------------------	--	---------------	-----------------

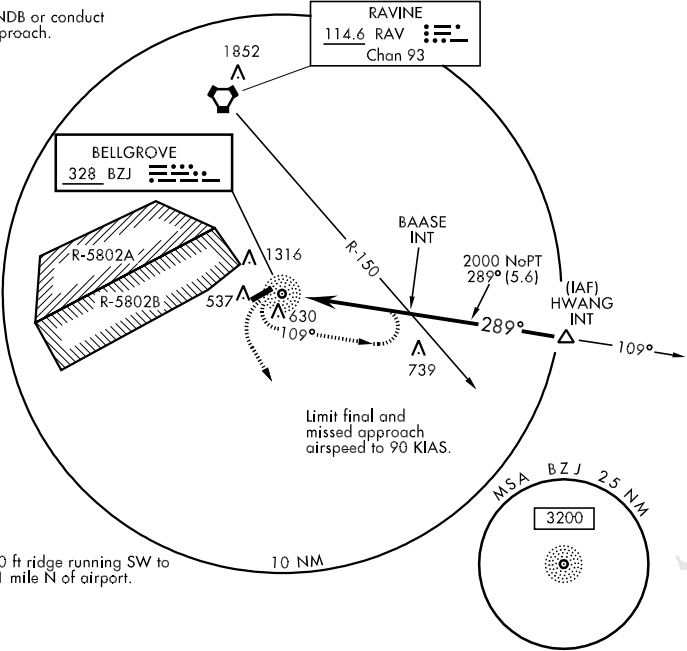
V VOR receiver required for this approach.
A When local altimeter setting not received use Harrisburg altimeter setting and increase MDA 80 ft.

MISSED APPROACH: Climb to 2000 via heading 160° then climbing left turn to 2900 direct BZJ NDB and hold.

HARRISBURG APP CON 118.25 269.45	MUIR TOWER * 126.2 (CTAF) 0 241.0	GND CON 121.625 265.6
--	--	---------------------------------

Procedure NA for arrivals at HWANG INT via V162 eastbound and V170 southeast bound.

Proceed VFR from BZJ NDB or conduct the specified missed approach.



NE-4, 22 OCT 2009 to 19 NOV 2009

NE-4, 22 OCT 2009 to 19 NOV 2009

ELEV 488	
CATEGORY	A
H-289°	1000- $\frac{3}{4}$ 461 (500- $\frac{3}{4}$)
Rwy 7 ldg 3567' Rwy 25 ldg 3867' MRL Rwy 7-25	