

RNAV (GPS) RWY 25

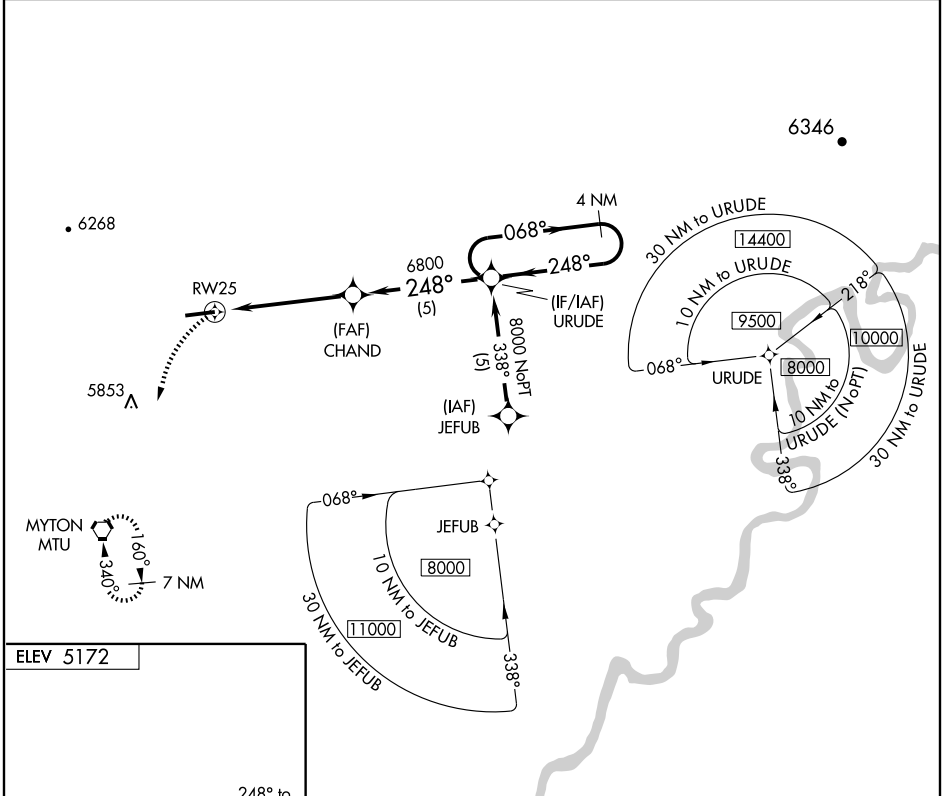
ROOSEVELT MUNI (74V)

APP CRS 248°	Rwy Idg 6500
	TDZE 5140
	Apt Elev 5172

⚠ Use Vernal altimeter setting. When not received, procedure not authorized.
⚠ NA GPS or RNP-0.3 required. DME/DME RNP-0.3 NA.

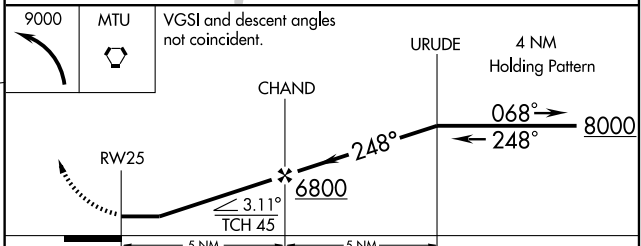
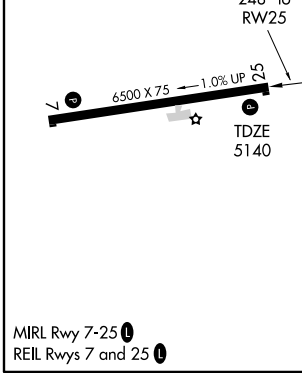
MISSED APPROACH: Climbing left turn to 9000 direct MTU VORTAC and hold.

AWOS-3 118.975	CEDAR CITY RADIO 122.1R	UNICOM 122.8 (CTAF) 📞
--------------------------	-----------------------------------	--



SW-4, 22 OCT 2009 to 19 NOV 2009

SW-4, 22 OCT 2009 to 19 NOV 2009



CATEGORY	A	B	C	D
LNAV MDA	5880-1	740 (800-1)	5880-2 740 (800-2)	NA
CIRCLING	6140-1¼ 968 (1000-1¼)	6140-1½ 968 (1000-1½)	6260-3 1088 (1100-3)	NA