

RNAV (GPS) RWY 23

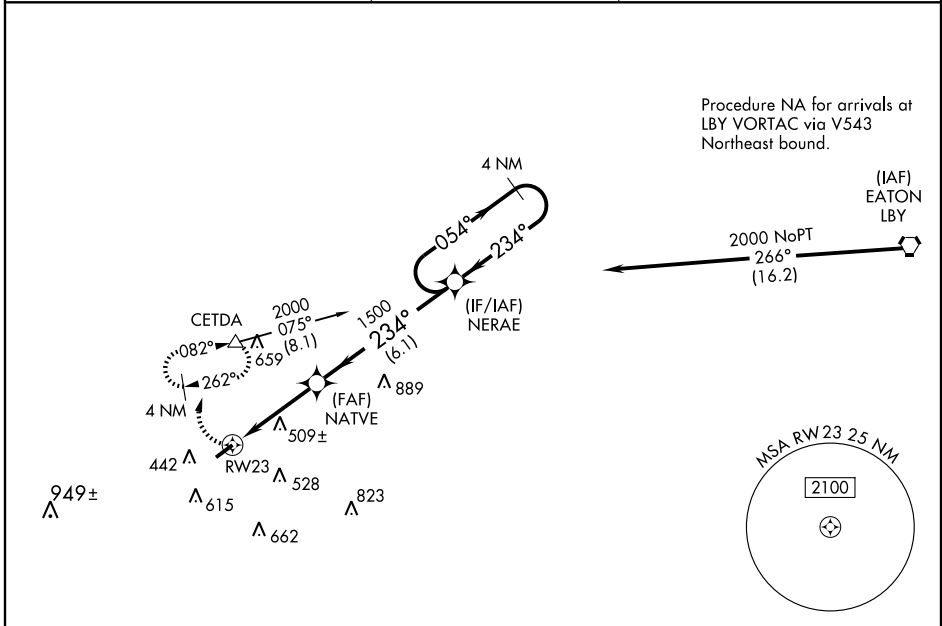
COLUMBIA-MARION COUNTY (ØRØ)

APP CRS	Rwy Idg	4460
234°	TDZE	265
	Apt Elev	265

▽ DME/DME RNP-0.3 NA. Visibility reduction by helicopters NA.
△ NA Use Hattiesburg-Laurel Rgnl altimeter setting; when not received, use Hattiesburg Bobby L Chain Muni altimeter setting and increase all MDA's 20 feet.

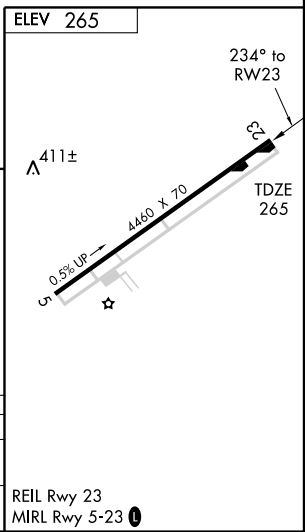
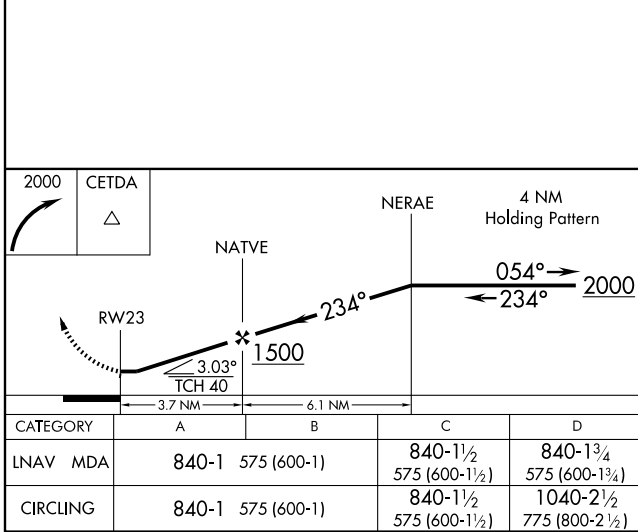
MISSED APPROACH: Climbing right turn to 2000 direct CETDA and hold.

HATTIESBURG-LAUREL AWOS-3 128.325	HOUSTON CENTER 126.8 327.8	UNICOM 122.8 (CTAF) Ø
---	--------------------------------------	---------------------------------



SC-4, 22 OCT 2009 to 19 NOV 2009

SC-4, 22 OCT 2009 to 19 NOV 2009



REIL Rwy 23
 MIRL Rwy 5-23 Ø