

LOC I-MKJ	APP CRS	Rwy Idg	5252
110.5	259°	TDZE	2519
		Apt Elev	2558

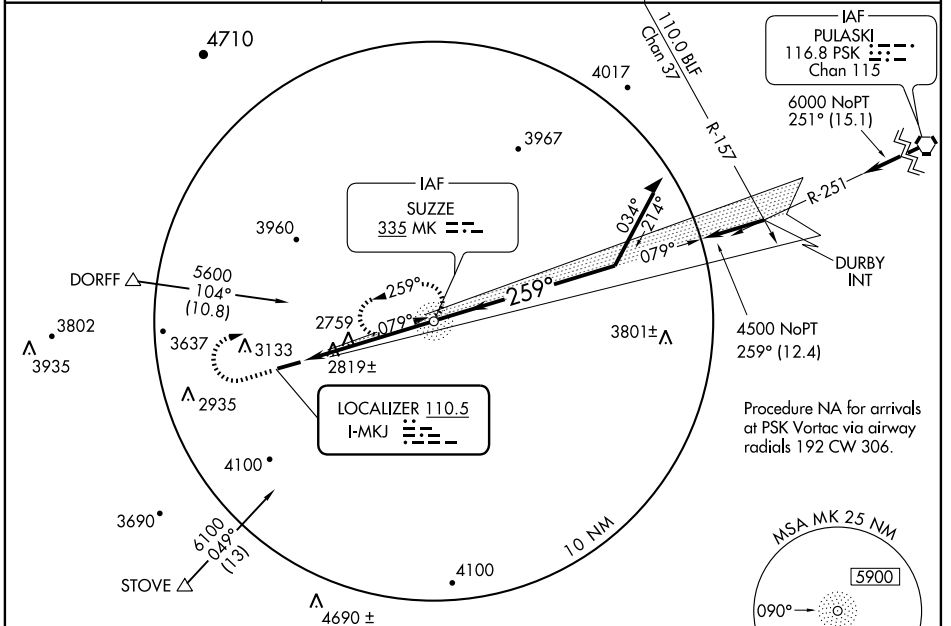
LOC RWY 26

MARION/MOUNTAIN EMPIRE (MKJ)

⚠ Circling not authorized north of Rwy 8-26. When local altimeter setting not received, use Twin County altimeter setting and increase all MDA 80 feet, S-26 Cat C visibility ¼ mile and Circling Cat B/C visibility ¼ mile. Visibility reduction by helicopters NA.

⚠ NA MISSED APPROACH: Climb to 4400 then climbing right turn to 6000 direct to MK NDB and hold.

AWOS-3 123.875	ATLANTA CENTER 132.9 319.9	UNICOM 122.7 (CTAF) 0
--------------------------	--------------------------------------	--

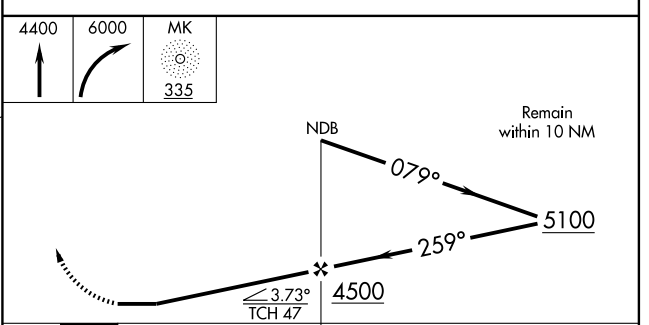
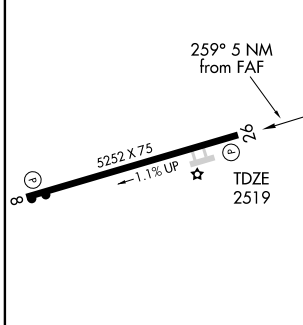


NE-3, 22 OCT 2009 to 19 NOV 2009

NE-3, 22 OCT 2009 to 19 NOV 2009

ELEV	2558
------	-------------

ADF REQUIRED



REIL Rwys 8 and 26
MIRL Rwy 8-26 **0**

FAF to MAP 5 NM					
Knots	60	90	120	150	180
Min:Sec	5:00	3:20	2:30	2:00	1:40

CATEGORY	A	B	C	D
S-26	3080-1	561 (600-1)	3080-1½ 561 (600-1½)	NA
CIRCLING	3260-1	702 (800-1)	3260-2 702 (800-2)	NA