

RNAV (GPS) RWY 36

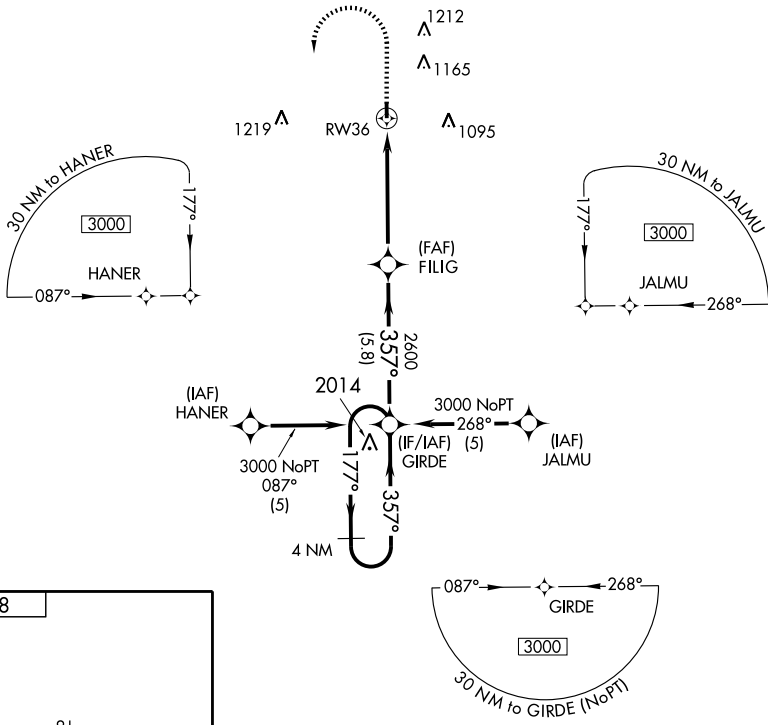
BLOOMFIELD MUNI (4K6)

APP CRS 357°	Rwy Idg 3401
	TDZE 888
	Apt Elev 888

▼ Use Ottumwa altimeter setting; when not available, procedure NA.
▲ NA GPS or RNP-0.3 required. DME/DME RNP-0.3 NA.

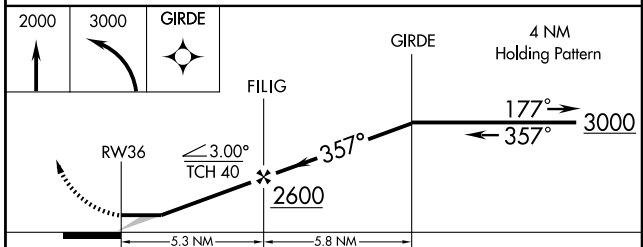
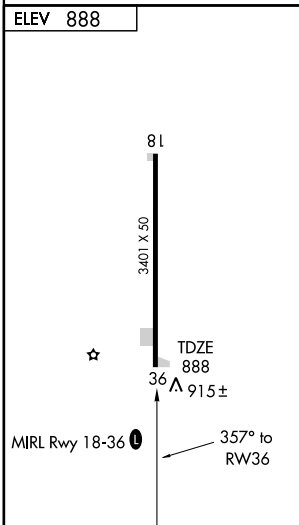
MISSED APPROACH: Climb to 2000 then climbing left turn to 3000 direct GIRDE WP and hold.

CHICAGO CENTER 118.15 354.1	UNICOM 122.8 (CTAF) 0
---------------------------------------	---------------------------------



NC-3, 22 OCT 2009 to 19 NOV 2009

NC-3, 22 OCT 2009 to 19 NOV 2009



CATEGORY	A	B	C	D
LNAV MDA	1340-1	452 (500-1)	1340-1¼ 452 (500-1¼)	NA
CIRCLING	1440-1	552 (600-1)	1520-1¾ 632 (700-1¾)	NA