

BLOOMFIELD, IOWA

AL-6415 (FAA)

NDB RWY 36

BLOOMFIELD MUNI (4K6)

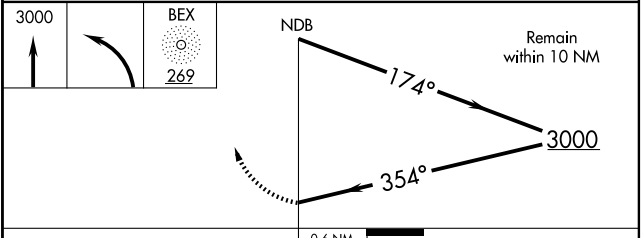
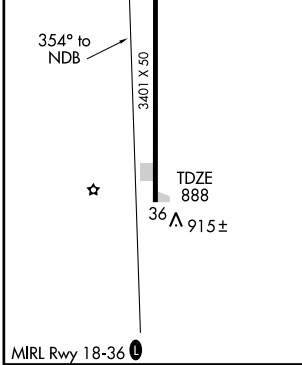
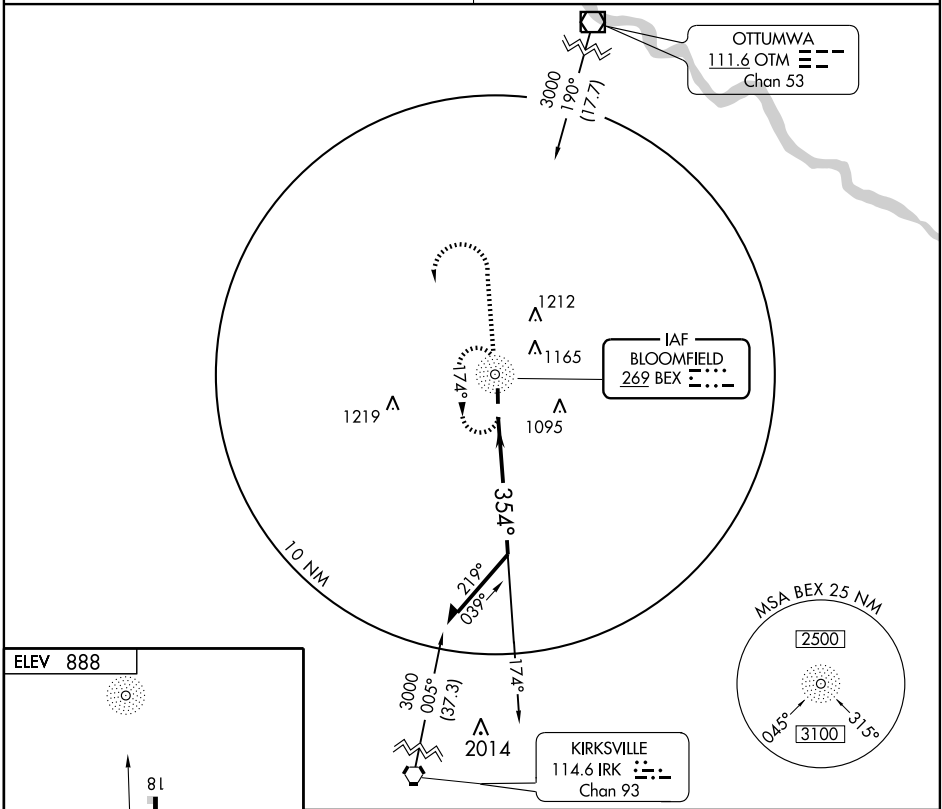
NDB BEX 269	APP CRS 354°	Rwy Idg TDZE Apt Elev	3401 888 888
-----------------------	------------------------	-----------------------------	---

Use Ottumwa altimeter setting; when not available, procedure NA.
 ▲ NA

MISSED APPROACH: Climb to 3000 then left turn direct BEX NDB and hold.

CHICAGO CENTER
118.15 354.1

UNICOM
122.8 (CTAF)



CATEGORY	A	B	C	D
S-36	1500-1	612 (700-1)	1500-1¾ 612 (700-1¾)	NA
CIRCLING	1500-1	612 (700-1)	1500-1¾ 612 (700-1¾)	NA

BLOOMFIELD, IOWA
Amdt 3 09071

40°44'N-92°26'W

BLOOMFIELD MUNI (4K6)

NDB RWY 36

NC-3, 22 OCT 2009 to 19 NOV 2009

NC-3, 22 OCT 2009 to 19 NOV 2009