

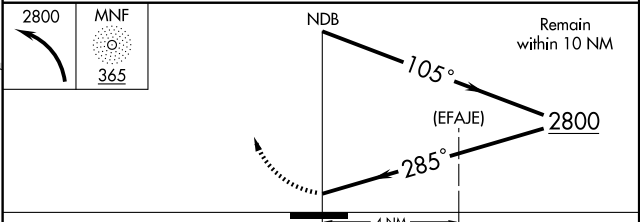
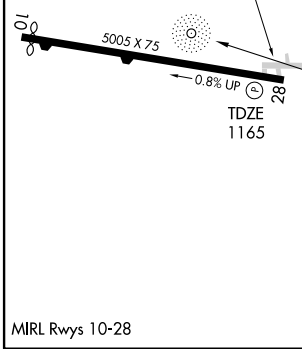
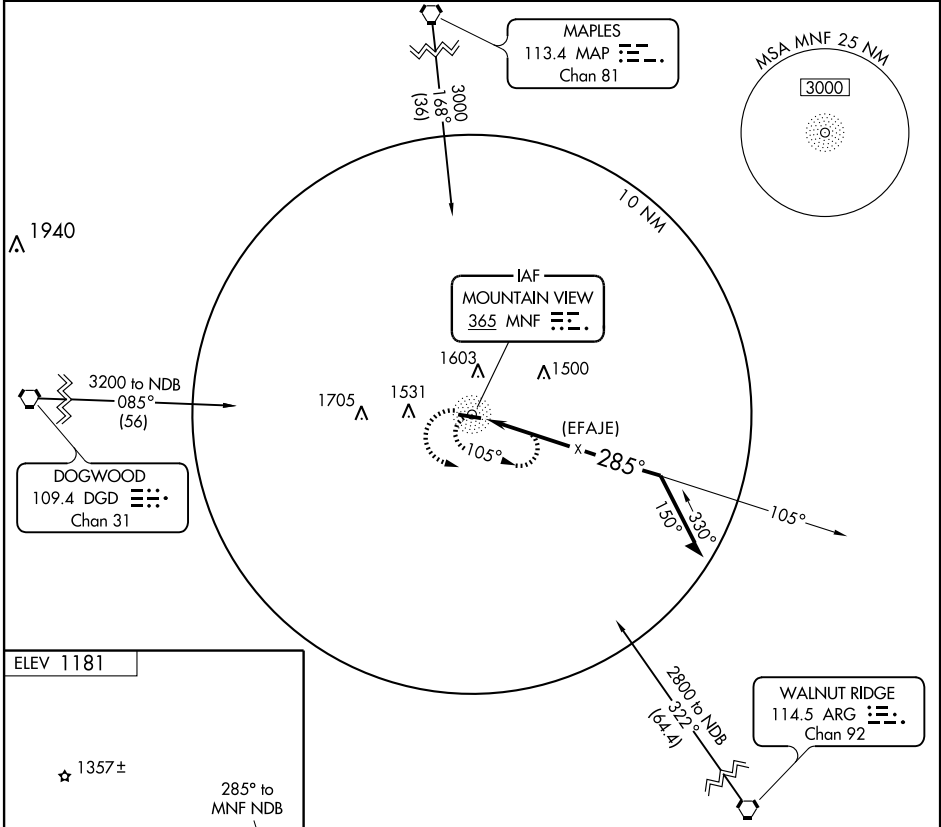
NDB or GPS RWY 28

MOUNTAIN VIEW (MNF)

NDB MNF	APP CRS	Rwy Idg	5005
365	285°	TDZE	1165
		Apt Elev	1181

Use Forney AAF altimeter setting. When not available procedure NA.	MISSED APPROACH: Climbing left turn to 2800 in MNF NDB holding pattern.
--	---

KANSAS CITY CENTER 128.35 284.67	UNICOM 122.8 (CTAF)
--	-------------------------------



CATEGORY	A	B	C	D
S-28	2060-1¼	895 (900-1¼)	2060-2¾ 895 (900-2¾)	2060-3 895 (900-3)
CIRCLING	2140-1¼ 971 (1000-1¼)	2140-1½ 971 (1000-1½)	2140-3	971 (1000-3)

NC-3, 22 OCT 2009 to 19 NOV 2009

NC-3, 22 OCT 2009 to 19 NOV 2009