

PINEVILLE, WEST VIRGINIA

AL-6411 (FAA)

# GPS RWY 8

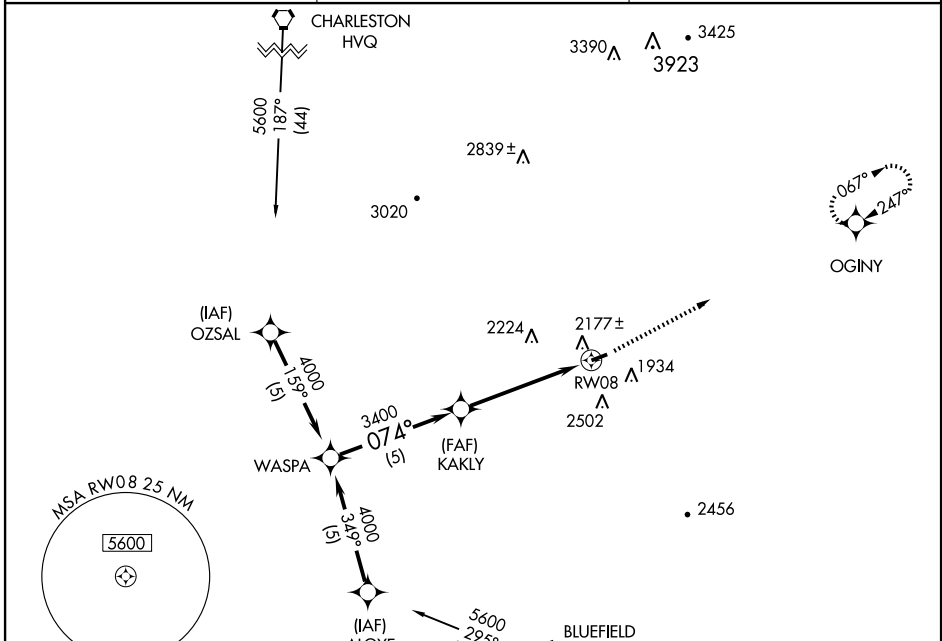
PINEVILLE/ KEE FIELD (I16)

APP CRS **074°**  
 Rwy Idg **3701**  
 TDZE **1770**  
 Apt Elev **1783**

**▽** Obtain local altimeter setting on CTAF; when not received, use Beckley altimeter setting.  
**△** NA Procedure NA at night.

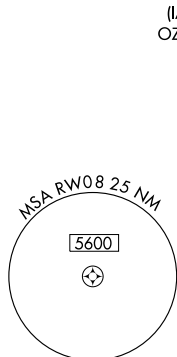
MISSED APPROACH: Climb to 5000 direct OGINY WP and hold.

AWOS-3 **120.625**      CHARLESTON APP CON **118.95 269.125**      UNICOM **122.8 (CTAF) 0**

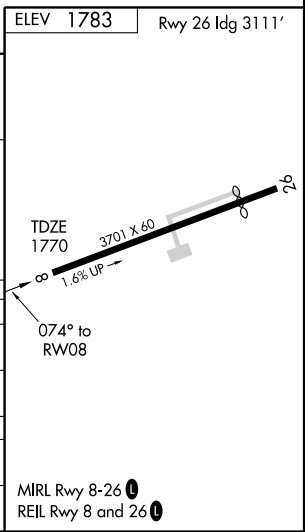
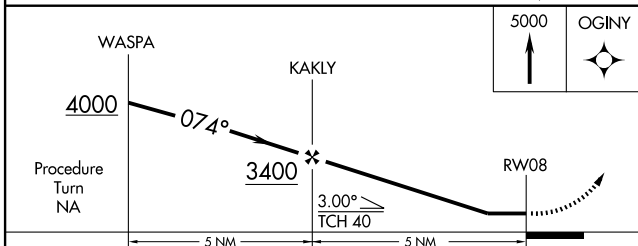


NE-4, 22 OCT 2009 to 19 NOV 2009

NE-4, 22 OCT 2009 to 19 NOV 2009



ELEV 1783      Rwy 26 Idg 3111'



CATEGORY	A	B	C	D
S-8	2460-1	690 (700-1)	2460-2	NA
CIRCLING	2620-1 837 (900-1)	2620-1¼ 837 (900-1¼)	2620-2½ 837 (900-2½)	NA
BECKLEY ALTIMETER SETTING MINIMUMS				
S-8	2620-1 850 (900-1)	2620-1¼ 850 (900-1¼)	2620-2½ 850 (900-2½)	NA
CIRCLING	2760-1¼ 977 (1000-1¼)	2760-1½ 977 (1000-1½)	2780-3 997 (1000-3)	NA

PINEVILLE, WEST VIRGINIA  
 Orig-B 04274

37°36'N - 81°34'W

# PINEVILLE/ KEE FIELD (I16)

## GPS RWY 8