

ORLAND, CALIFORNIA

AL-6410 (FAA)

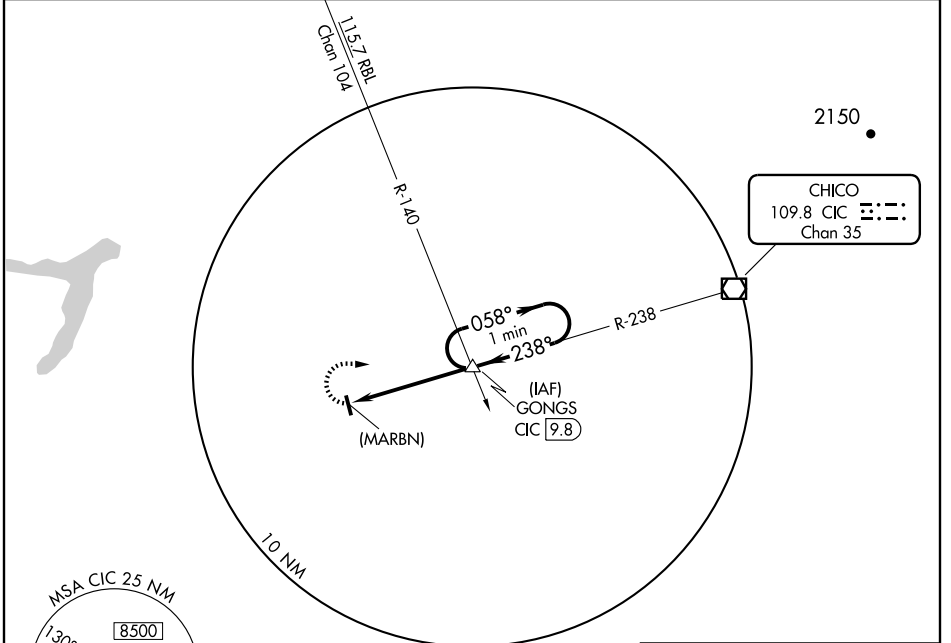
VOR/DME CIC 109.8 Chan 35	APP CRS 238°	Rwy Idg TDZE Apt Elev N/A N/A 215
---	------------------------	---

VOR or GPS-A
ORLAND/ HAIGH FIELD (O37)

NA Use Chico altimeter setting, when not received, use Redding altimeter setting.

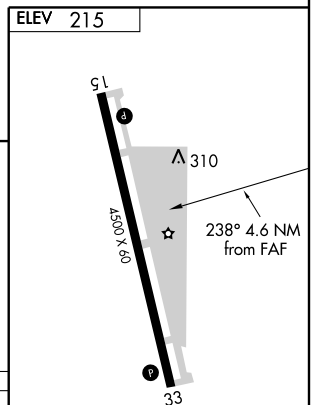
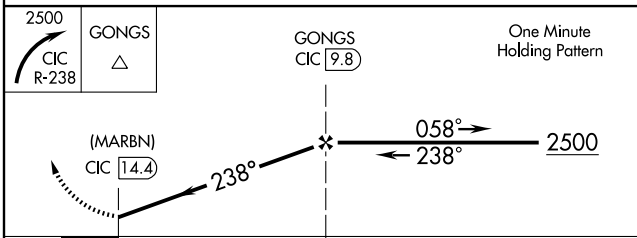
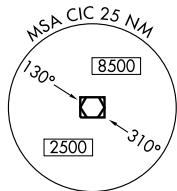
MISSED APPROACH: Climbing right turn to 2500 via CIC R-238 to GONGS INT and hold.

OAKLAND CENTER 132.2 350.3	UNICOM 122.7 (CTAF) 0
--------------------------------------	--



SW-2, 22 OCT 2009 to 19 NOV 2009

SW-2, 22 OCT 2009 to 19 NOV 2009



2500 CIC R-238	GONGS △	GONGS CIC 9.8	One Minute Holding Pattern	
(MARBN) CIC 14.4	058° → 2500 ← 238°			
4.6 NM				
CATEGORY	A	B	C	D
CIRCLING	900-1	685 (700-1)	900-2 685 (700-2)	900-2 1/4 685 (700-2 1/4)
REDDING ALTIMETER SETTING MINIMUMS				
CIRCLING	1020-1 805 (900-1)	1020-1 1/4 805 (900-1 1/4)	1020-2 1/4 805 (900-2 1/4)	1020-2 1/2 805 (900-2 1/2)

MRL Rwy 15-33 0	FAF to MAP 4.6 NM				
Knots	60	90	120	150	180
Min:Sec	4:36	3:04	2:18	1:50	1:32

ORLAND, CALIFORNIA
Amdt 6 03135

39°43'N - 122°09'W

ORLAND/ HAIGH FIELD (O37)
VOR or GPS-A