

NDB or GPS RWY 16

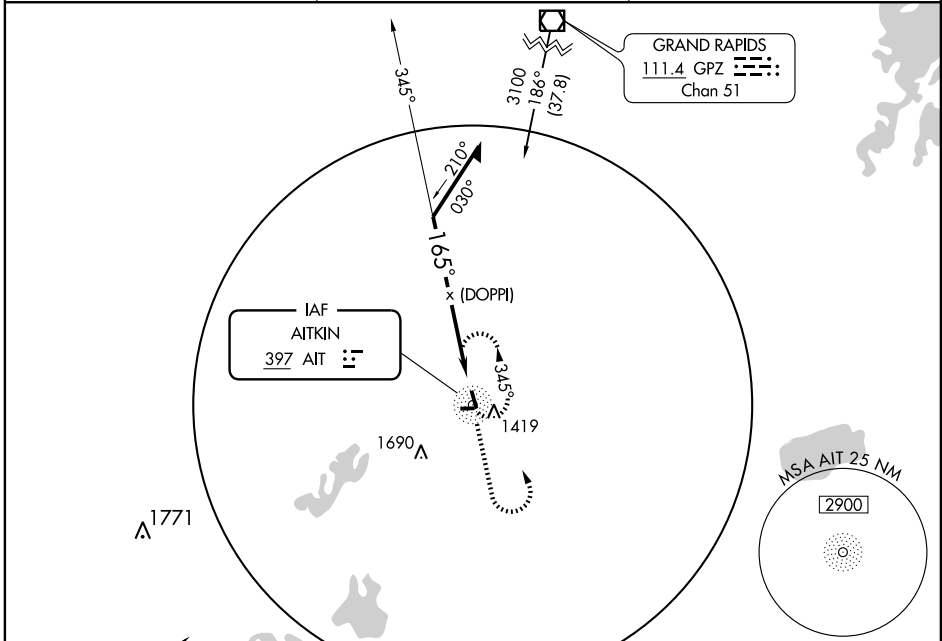
AITKIN MUNI-STEVE KURTZ FIELD (AIT)

NDB AIT 397	APP CRS 165°	Rwy Idg TDZE Apt Elev	4018 1205 1205
-----------------------	------------------------	-----------------------------	---

▽
▲ NA

MISSED APPROACH: Climb to 3000 then left turn direct AIT NDB and hold.

AWOS-3 118.675	MINNEAPOLIS CENTER 118.05 239.0	UNICOM 123.05 (CTAF) 0
--------------------------	---	---



NC-1, 22 OCT 2009 to 19 NOV 2009

NC-1, 22 OCT 2009 to 19 NOV 2009

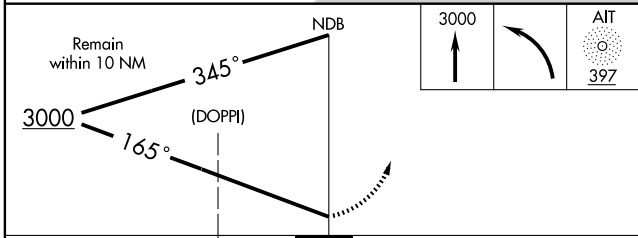
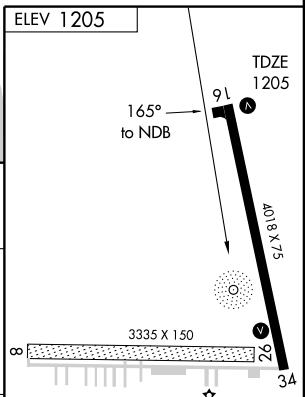
▲ BRAINERD
116.9 BRD **118.8**
Chan 116

▲ 1771

▲ 1690

▲ 1419

10 NM



CATEGORY	A	B	C	D
S-16	1840-1	635 (700-1)	1840-1¾ 635 (700-1¾)	NA
CIRCLING	1840-1	635 (700-1)	1840-1¾ 635 (700-1¾)	NA

REIL Rwy 16 and 34 **0**
MIRL Rwy 16-34 **0**