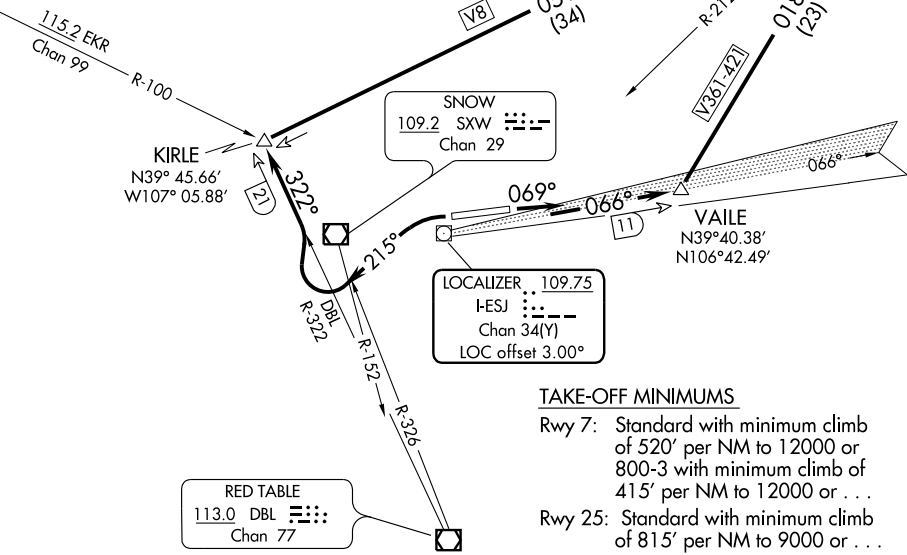


GYPSUM FOUR DEPARTURE (OBSTACLE)

ATIS 135.575
 CLNC DEL
 121.8
 GND CON
 121.8
 EAGLE TOWER ★
 119.8
 DENVER CENTER
 128.65 282.2
 DENVER CLNC DEL
 124.75 (When tower closed)



TAKE-OFF MINIMUMS

Rwy 7: Standard with minimum climb of 520' per NM to 12000 or 800-3 with minimum climb of 415' per NM to 12000 or ...
 Rwy 25: Standard with minimum climb of 815' per NM to 9000 or ...
 ... 4100-3 for climb in visual conditions

TAKEOFF OBSTACLE NOTES

Rwy 7: Windssock 99' from DER, 352' left of centerline, 12' AGL/6552' MSL.
 OL on tower 2.2 NM from DER, 1688' right of centerline, 57' AGL/7057' MSL.
 Trees beginning 1.1 NM from DER, 1945' right of centerline, up to 18' AGL/7017' MSL.
 Tree 2.2 NM from DER, 3227' right of centerline, 27' AGL/7252' MSL.
 Rwy 25: Multiple trees beginning 1.6 NM from DER, 233' left of centerline, up to 15' AGL/7694' MSL.
 Pole 2 NM from DER, 111' left of centerline, 14' AGL/7333' MSL.
 Multiple trees beginning 1.4 NM from DER, 795' right of centerline, up to 16' AGL/7615' MSL.
 Multiple poles, tank, and OL on tower beginning 1.4 NM from DER, 77' right of centerline, up to 37' AGL/7716' MSL.

NOTE: Chart not to scale.

DEPARTURE ROUTE DESCRIPTION

TAKE-OFF RUNWAY 7: Climb heading 069° and I-ESJ northeast course to VAILE INT/I-ESJ 11 DME then turn left via RLG R-198 to RLG VOR/DME or ...

TAKE-OFF RUNWAY 25: Climbing left turn heading 215°, upon crossing SXW R-152 or DBL R-326 turn right via DBL R-322 to KIRLE INT/DBL 21 DME then turn right via RLG R-231 to RLG VOR/DME or ...

... Climb in visual conditions to cross Eagle County Rgnl Airport northeast bound at or above 10500, then via RLG R-212 to RLG VOR/DME.

GYPSUM FOUR DEPARTURE (OBSTACLE)

SW-1, 22 OCT 2009 to 19 NOV 2009

SW-1, 22 OCT 2009 to 19 NOV 2009