

CLARKSVILLE, ARKANSAS

AL-6402 (FAA)

# RNAV (GPS) RWY 27

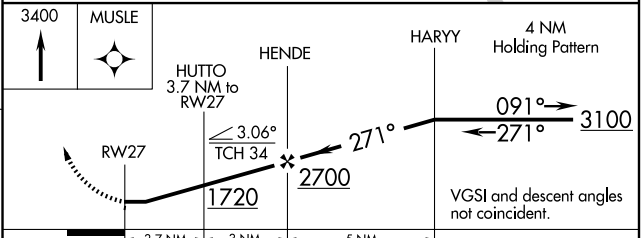
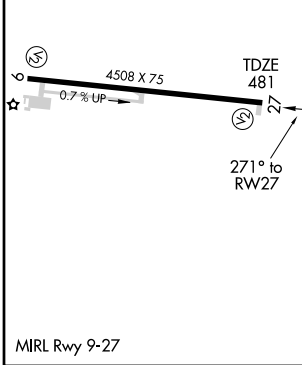
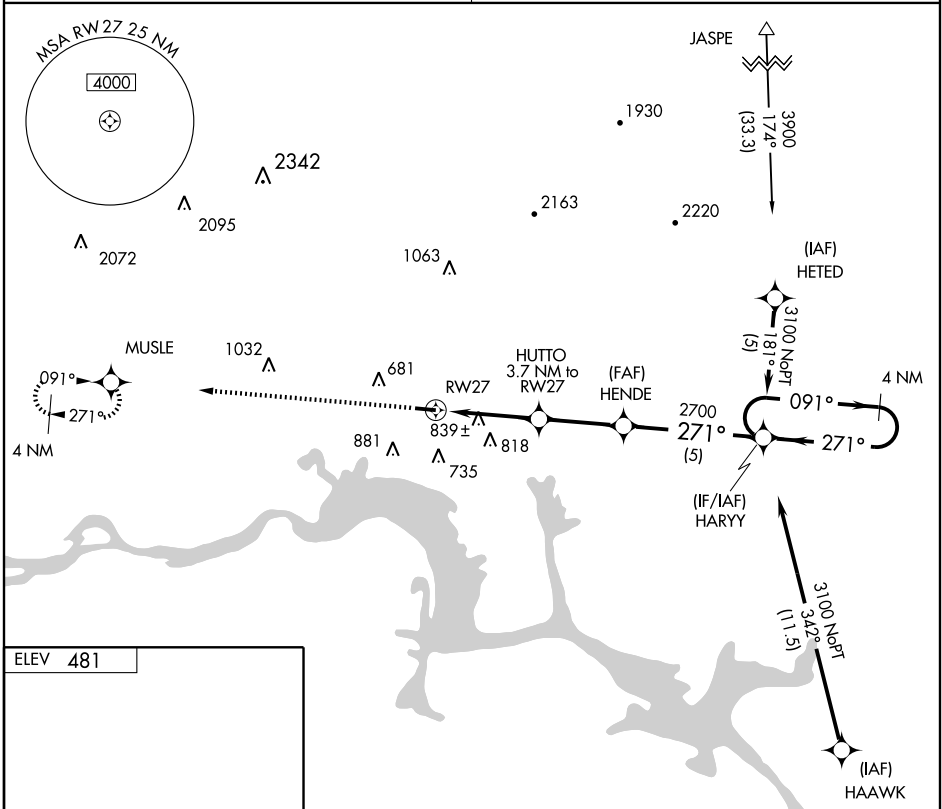
CLARKSVILLE MUNI (H35)

APP CRS	Rwy Idg	<b>4508</b>
<b>271°</b>	TDZE	<b>481</b>
	Apt Elev	<b>481</b>

**▼** Use Russellville Rgnl altimeter setting; if not received, use Fort Smith Rgnl altimeter setting and increase all MDAs 60 feet. DME/DME RNP-0.3 NA. When VGSI inoperative, procedure not authorised at night.

**MISSED APPROACH:** Climb to 3400 direct MUSLE WP and hold.

MEMPHIS CENTER <b>128.475 377.15</b>	UNICOM <b>122.8 (CTAF)</b>
---	-------------------------------



CATEGORY	A	B	C	D
LNAV MDA	1160-1	679 (700-1)	NA	
CIRCLING	1220-1 739 (800-1)	1240-1¼ 759 (800-1¼)	NA	

CLARKSVILLE, ARKANSAS  
Orig 07242

35° 28' N-93° 26' W

# RNAV (GPS) RWY 27

SC-1, 22 OCT 2009 to 19 NOV 2009

SC-1, 22 OCT 2009 to 19 NOV 2009