

RNAV (GPS) RWY 6

WEST MILFORD / GREENWOOD LAKE (4N1)

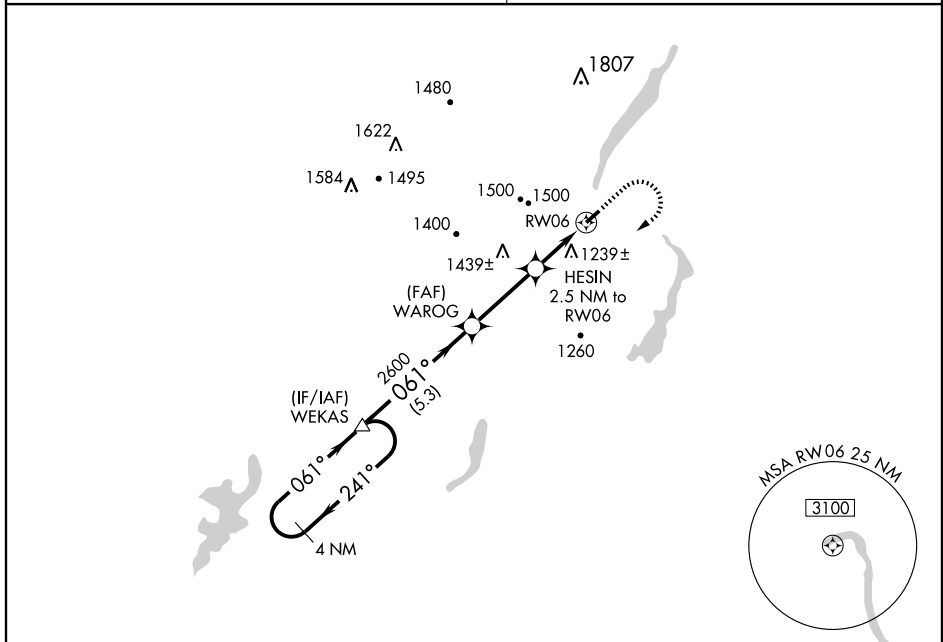
APP CRS 061°	Rwy Idg 3471
	TDZE 791
	Apt Elev 791

▽ GPS or RNP-0.3 Required. DME/DME RNP-0.3 NA.
▲ NA Obtain local altimeter setting on CTAF; when not received, use Teterboro altimeter setting.

MISSED APPROACH: Climb to 2000 then climbing right turn to 3000 direct WEKAS WP and hold.

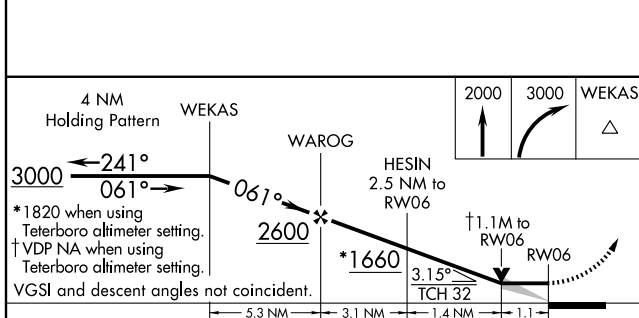
NEW YORK APP CON
127.6 379.9

CTAF
122.9 0

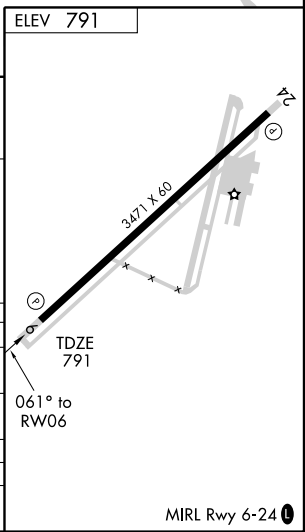


NE-2, 22 OCT 2009 to 19 NOV 2009

NE-2, 22 OCT 2009 to 19 NOV 2009



CATEGORY	A	B	C	D
RNAV MDA	1540-1 749 (800-1)	1540-1¼ 749 (800-1¼)		NA
CIRCLING	1560-1 769 (800-1)	1600-1¼ 809 (900-1¼)		NA
TETERBORO ALTIMETER SETTING MINIMUMS				
RNAV MDA	1700-1¼	909 (1000-1¼)		NA
CIRCLING	1720-1¼ 929 (1000-1¼)	1760-1½ 969 (1000-1½)		NA



RNAV (GPS) RWY 6