

RNAV (GPS) RWY 2

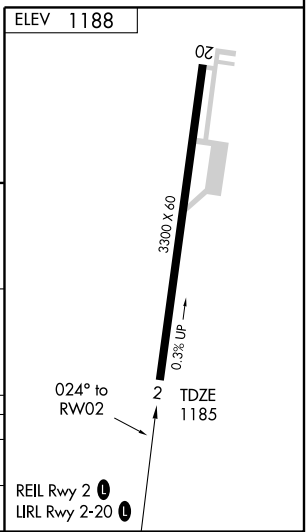
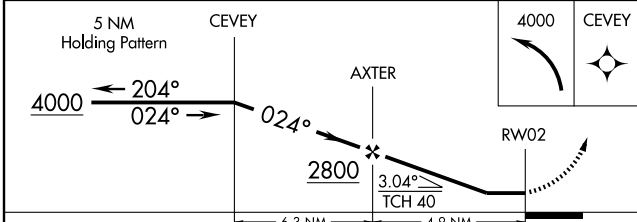
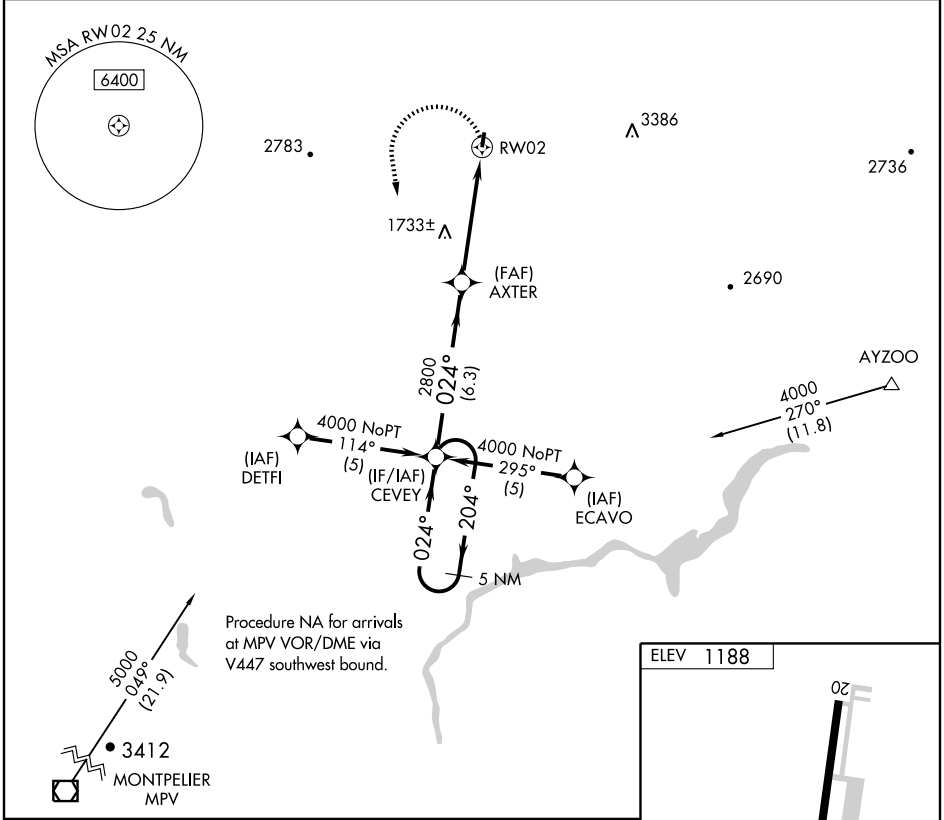
LYNDONVILLE / CALEDONIA COUNTY (CDA)

APP CRS 024°	Rwy Idg 3300
	TDZE 1185
	Apt Elev 1188

▼ If local altimeter setting not received, use Whitefield, NH altimeter setting and increase all MDAs 80 feet. DME/DME RNP-0.3 NA.
▲ NA Visibility reduction by helicopters NA.

MISSED APPROACH: Climbing left turn to 4000 direct CEVEY and hold.

AWOS-3 119.275	BOSTON CENTER 135.7 282.2	GCO 121.725	UNICOM 122.8 (CTAF) 0
--------------------------	-------------------------------------	-----------------------	---------------------------------



CATEGORY	A	B	C	D
LNAV	2000-1 815 (900-1)	2000-1¼ 815 (900-1¼)	2000-2½ 815 (900-2½)	NA
CIRCLING	2000-1 812 (900-1)	2000-1¼ 812 (900-1¼)	2000-2½ 812 (900-2½)	NA

RNAV (GPS) RWY 2

NE-1, 22 OCT 2009 to 19 NOV 2009

NE-1, 22 OCT 2009 to 19 NOV 2009