

MADERA, CALIFORNIA

AL-6399 (FAA)

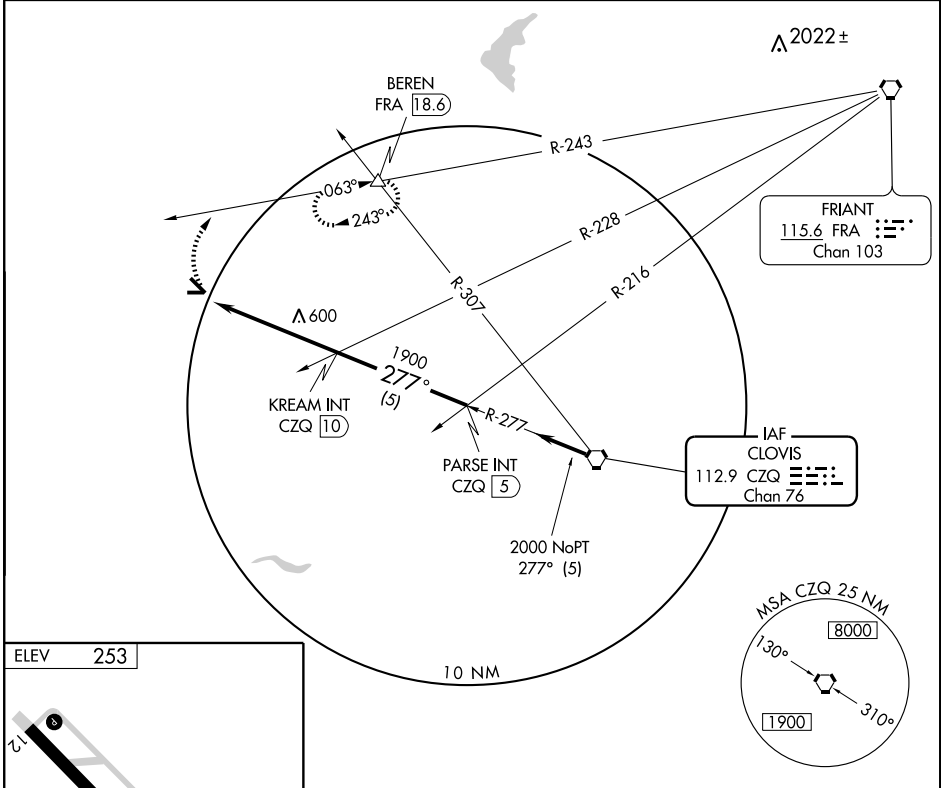
VORTAC CZQ 112.9 Chan 76	APP CRS 277°	Rwy Idg TDZE 253 Apt Elev 253
--	------------------------	---

VOR RWY 30

MADERA MUNI (M.A.E.)

 Circling to Rwy 7-25 not authorized.	MALSF 	MISSED APPROACH: Climbing right turn to 2000 via FRA R-243 to BEREN Int/FRA 18.6 DME and hold.
--	-----------	--

ASOS 134.725	FRESNO APP CON 119.45	UNICOM 122.8 (CTAF)
------------------------	---------------------------------	-------------------------------



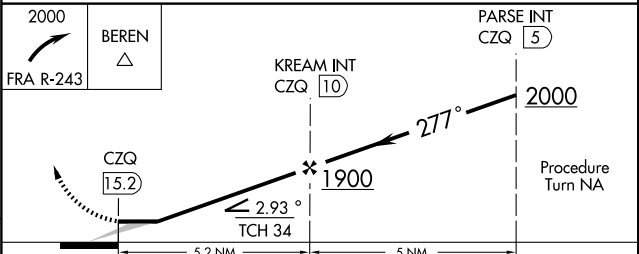
SW-2, 22 OCT 2009 to 19 NOV 2009

SW-2, 22 OCT 2009 to 19 NOV 2009

ELEV 253

MIRL Rwy 12-30

FAF to MAP 5.2 NM					
Knots	60	90	120	150	180
Min:Sec	5:12	3:28	2:36	2:05	1:44



CATEGORY	A	B	C	D
S-30	960-1 707 (800-1)		960-2 707 (800-2)	NA
CIRCLING	960-1 707 (800-1)		960-2 707 (800-2)	NA

MADERA, CALIFORNIA
Amdt 10 08157

36°59'N - 120°07'W

MADERA MUNI (M.A.E.) VOR RWY 30