

MADERA, CALIFORNIA


AL-6399 (FAA)

RNAV (GPS) RWY 30

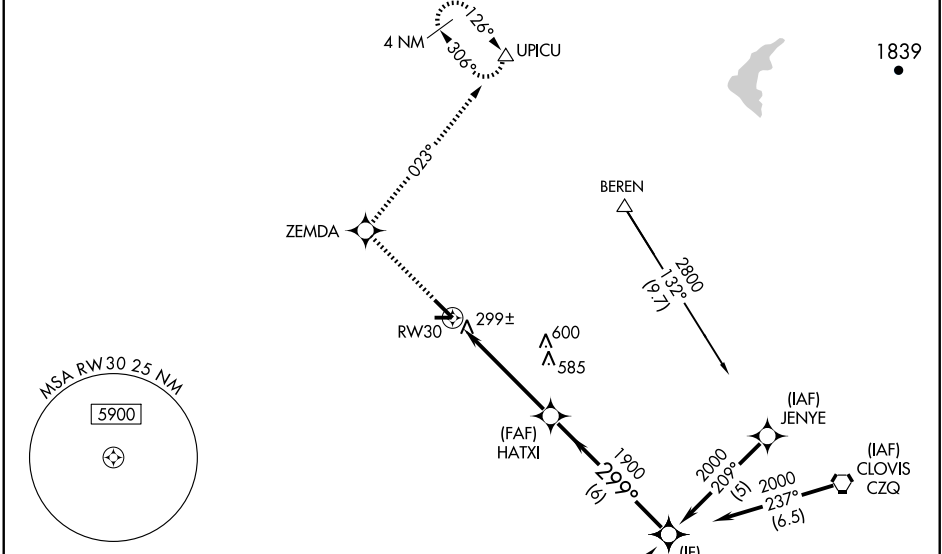
MADERA MUNI (M.A.E.)

WAAS CH 90209 W30A	APP CRS 299°	Rwy Idg TDZE 255 Apt Elev 255	5545
--	------------------------	---	-------------

⚠ DME/DME RNP-0.3 NA. Circling NA to Rwy 7/25.
⚠ Baro-VNAV NA when using Fresno Yosemite Intl altimeter setting.
 For uncompensated Baro-VNAV systems, LNAV/VNAV NA below -1.5°C (5°F) or above 54°C (130°F).
 When local altimeter setting not received, use Fresno Yosemite Intl altimeter setting and increase all DA 64 feet and all visibilities ¼ mile; increase all MDA 80 feet and all visibilities ¼ mile.
 VDP NA when using Fresno Yosemite Intl altimeter setting.

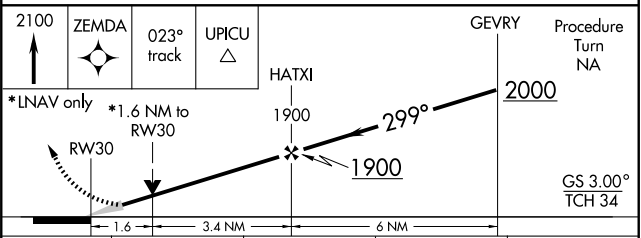
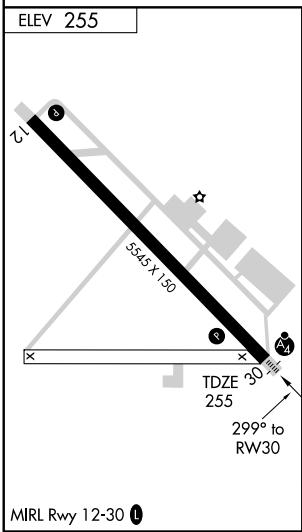
MALSF

MISSED APPROACH: Climb to 2100 direct ZEMDA and via 023° track to UPICU and hold.

ASOS 134.725	FRESNO APP CON 119.45	UNICOM 122.8 (CTAF) 0
------------------------	---------------------------------	--



SW-2, 22 OCT 2009 to 19 NOV 2009

SW-2, 22 OCT 2009 to 19 NOV 2009



CATEGORY	A	B	C	D
LPV DA	505-1 250 (300-1)			NA
LNAV/VNAV DA	584-1¼ 329 (400-1¼)			NA
LNAV MDA	800-1 545 (600-1)	800-1½ 545 (600-1½)		NA
CIRCLING	800-1 545 (600-1)	800-1½ 545 (600-1½)		NA

MADERA, CALIFORNIA
 Orig 08269

36°59'N-120°07'W

MADERA MUNI (M.A.E.) RNAV (GPS) RWY 30