

MADERA, CALIFORNIA

AL-6399 (FAA)

RNAV (GPS) RWY 12

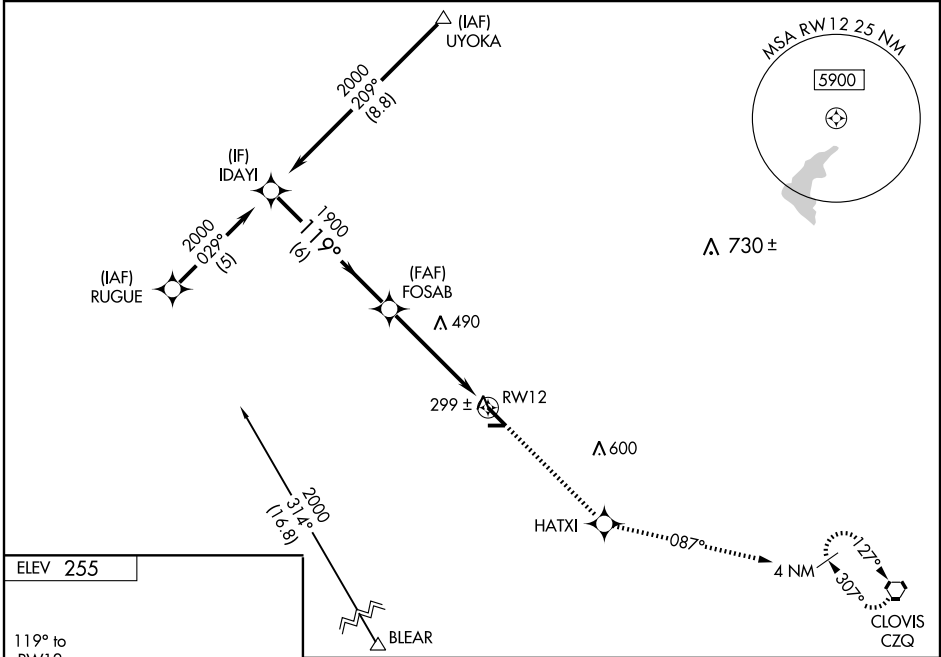
MADERA MUNI (M.A.E)

WAAS CH 62909 W12A	APP CRS 119°	Rwy Idg TDZE 253 Apt Elev 255	5545
--	------------------------	---	-------------

▽ DME/DME RNP-0.3 NA. Circling NA to Rwy 7/25.
▲ Baro-VNAV NA when using Fresno Yosemite Intl altimeter setting.
 For uncompensated Baro-VNAV systems, LNAV/VNAV NA below -15°C (5°F) or above 54°C (130°F).
 When local altimeter setting not received, use Fresno Yosemite Intl altimeter setting and increase all DA 64 feet and all visibilities ¼ mile; increase all MDA 80 feet and all visibilities ¼ mile.
 VDP NA when using Fresno Yosemite Intl altimeter setting.

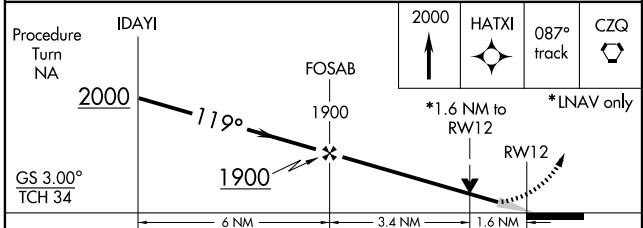
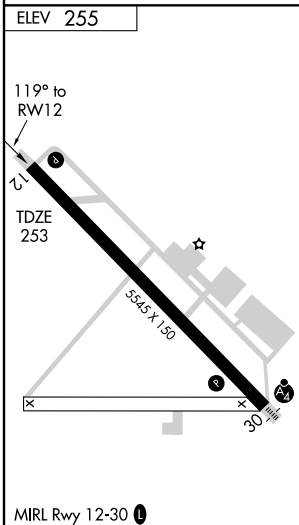
MISSED APPROACH: Climb to 2000 direct HATXI and via 087° track to CZQ VORTAC and hold.

ASOS 134.725	FRESNO APP CON 119.45	UNICOM 122.8 (CTAF) 0
------------------------	---------------------------------	--



SW-2, 22 OCT 2009 to 19 NOV 2009

SW-2, 22 OCT 2009 to 19 NOV 2009



CATEGORY	A	B	C	D
LPV DA	503-1	250 (300-1)		NA
LNAV/VNAV DA	569-1¼	316 (400-1¼)		NA
LNAV MDA	800-1	547 (600-1)	800-1½ 547 (600-1½)	NA
CIRCLING	800-1	545 (600-1)	800-1½ 545 (600-1½)	NA

MADERA, CALIFORNIA
 Orig 08269

36°59'N-120°07'W

MADERA MUNI (M.A.E) RNAV (GPS) RWY 12