

WAAS CH <b>72613</b> <b>W18A</b>	APP CRS <b>183°</b>	Rwy Idg <b>4406</b> TDZE <b>119</b> Apt Elev <b>119</b>
--	------------------------	---

# RNAV (GPS) RWY 18

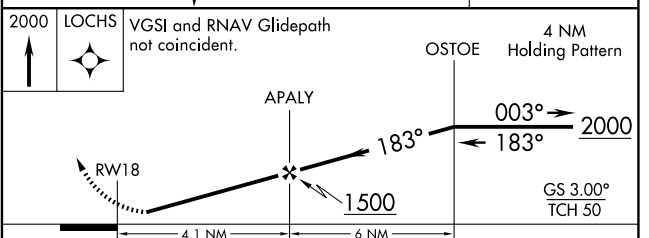
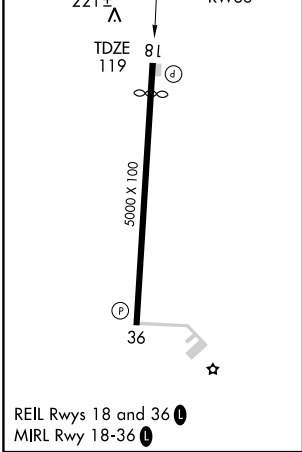
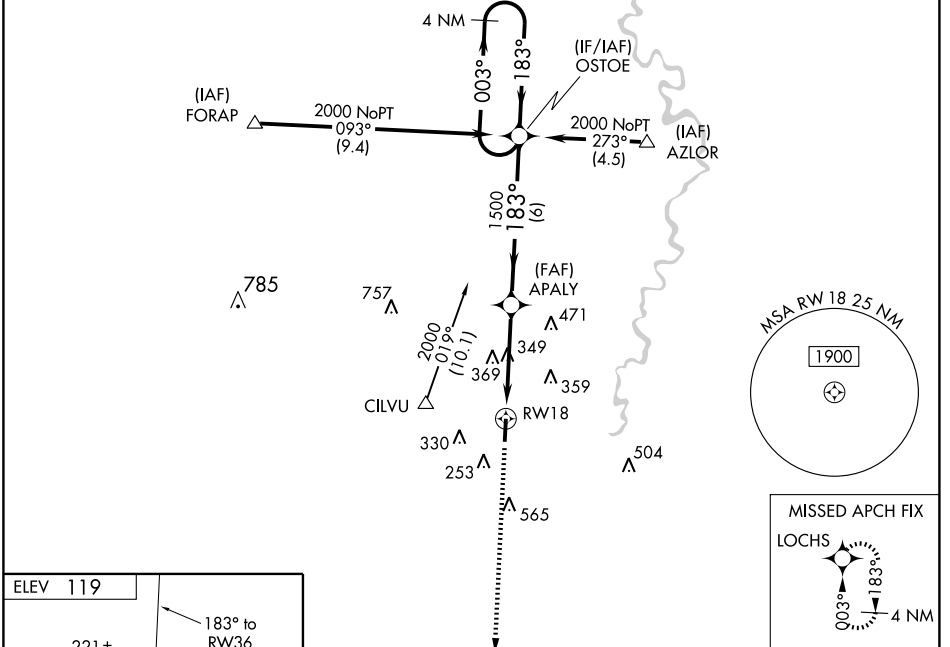
BOGALUSA/ GEORGE R. CARR MEMORIAL AIR FIELD (BXA)

For uncompensated Baro-VNAV systems, LNAV/VNAV NA below -15°C (5° F) or above 54° C (130° F). DME/DME RNP-0.3 NA. Visibility reduction by helicopters NA.

**▼** Baro-VNAV NA when using Lakefront altimeter setting. When local altimeter setting not received, use Lakefront altimeter setting and increase all DA 124 feet and all MDA 140 feet, increase LPV and LNAV/VNAV all Cats. visibility ½ mile, increase LNAV Cat. C visibility ¼ mile, and increase Circling Cat. C visibility ½ mile.

MISSED APPROACH: Climb to 2000 direct LOCHS and hold.

AWOS-3 <b>118.025</b>	HOUSTON CENTER <b>126.8 327.8</b>	GCO <b>135.075</b>	UNICOM <b>122.8 (CTAF) 0</b>
--------------------------	--------------------------------------	-----------------------	---------------------------------



CATEGORY	A	B	C	D
LPV DA	463-1¼		344 (400-1¼)	NA
LNAV/VNAV DA	532-1½		413 (500-1½)	NA
LNAV MDA	620-1	501 (600-1)	620-1½ 501 (600-1½)	NA
CIRCLING	620-1	501 (600-1)	720-1¾ 601 (700-1¾)	NA

# RNAV (GPS) RWY 18

SC-4, 22 OCT 2009 to 19 NOV 2009

SC-4, 22 OCT 2009 to 19 NOV 2009