

ANAHUAC, TEXAS

AL-6395 (FAA)

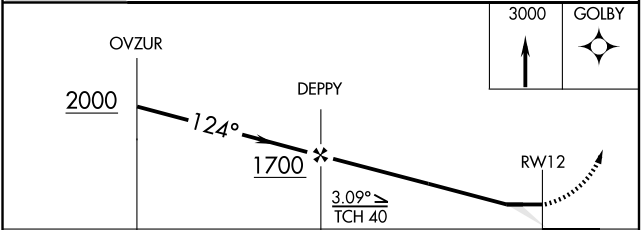
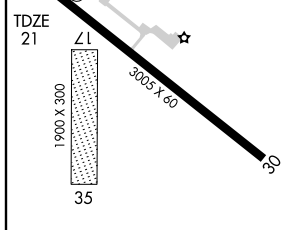
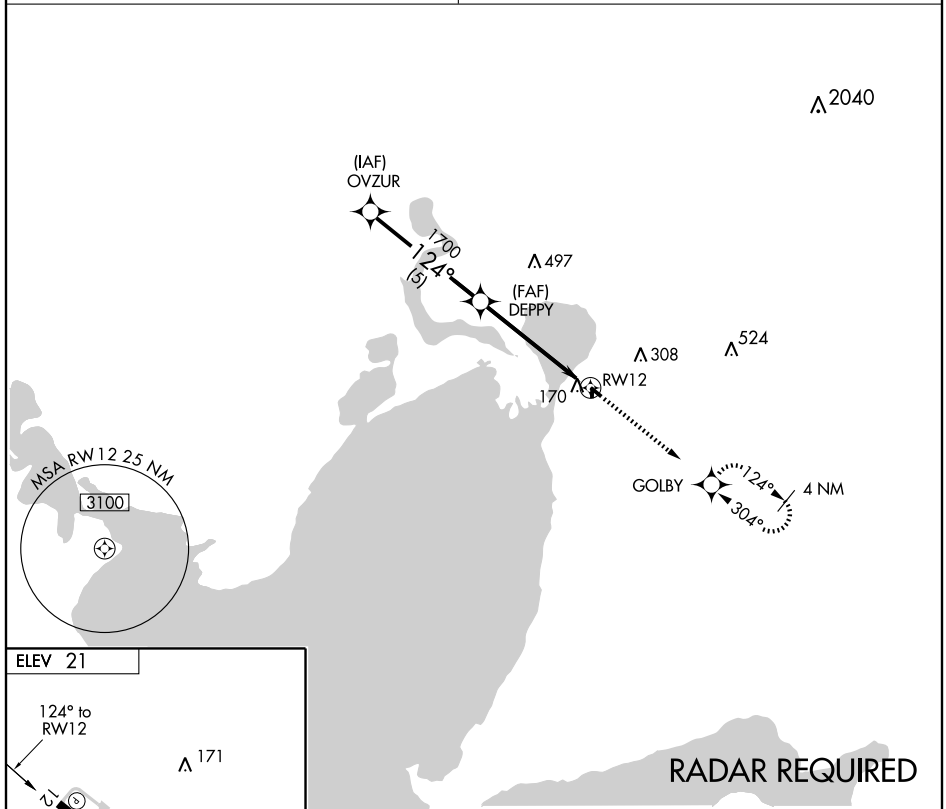
# RNAV (GPS) RWY 12

ANAHUAC/CHAMBERS COUNTY (T00)

APP CRS <b>124°</b>	Rwy Idg <b>3005</b> TDZE <b>21</b> Apt Elev <b>21</b>
------------------------	---

<b>▲ NA</b> Use Houston William P. Hobby altimeter setting. GPS or RNP-0.3 required. DME/DME RNP-0.3 NA	MISSED APPROACH: Climb to 3000 direct GOLBY WP and hold.
---	--

HOUSTON APP CON <b>134.45 281.4</b>	CTAF <b>122.9 0</b>
--	------------------------



CATEGORY	A	B	C	D
LNAV MDA	560-1	539 (600-1)	560-1½ 539 (600-1½)	NA
CIRCLING	620-1	599 (600-1)	620-1½ 599 (600-1½)	NA

ANAHUAC, TEXAS  
Orig-B 07354

29°46'N- 94°40'W

# ANAHUAC/CHAMBERS COUNTY (T00)

## RNAV (GPS) RWY 12

SC-5, 22 OCT 2009 to 19 NOV 2009

SC-5, 22 OCT 2009 to 19 NOV 2009