

MARATHON, FLORIDA

AL-6394 (FAA)

WAAS CH 58312 W25A	APP CRS 251°	Rwy Idg 5008 TDZE 5 Apt Elev 5
--	------------------------	---

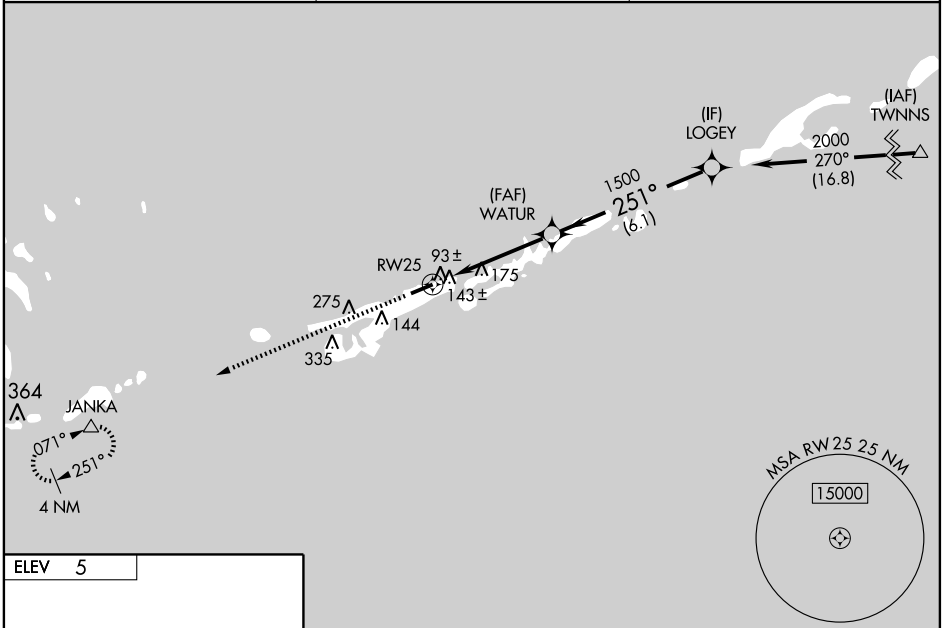
RNAV (GPS) RWY 25

MARATHON / THE FLORIDA KEYS MARATHON (MTH)

▼ DME/DME RNP-0.3 NA. Visibility reduction by helicopters NA.
▲ When local altimeter setting not received, use Key West Intl altimeter setting and increase all DA 93 feet and MDA 100 feet, and increase LPV all Cats visibility 1/2 mile; LNAV/VNAV all Cats visibility 1/4 mile; LNAV Cats C and D visibility 1/4 mile and increase Circling Cat D visibility 1/4 mile.
 Baro-VNAV NA below -15°C (5°F) and above 48°C (118°F).
 Baro-VNAV NA when using Key West Intl altimeter setting.

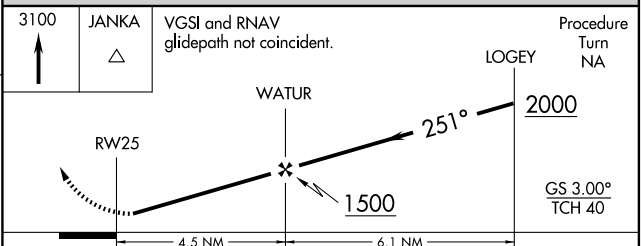
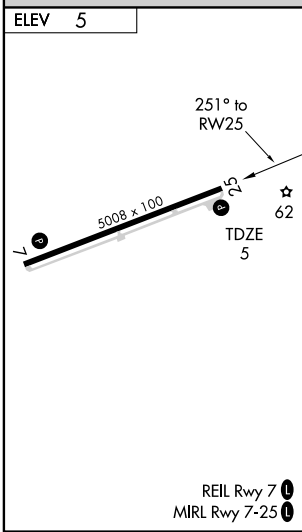
MISSED APPROACH: Climb to 3100 direct JANKA and hold.

ASOS 135.525	MIAMI CENTER 133.5 306.9	UNICOM 122.8 (CTAF) 0
------------------------	------------------------------------	---------------------------------



SE-3, 22 OCT 2009 to 19 NOV 2009

SE-3, 22 OCT 2009 to 19 NOV 2009



CATEGORY	A	B	C	D
LPV DA	315-1 310 (400-1)			
LNAV/VNAV DA	404-1 1/2 399 (400-1 1/2)			
LNAV MDA	440-1	435 (500-1)	440-1 1/4 435 (500-1 1/4)	440-1 1/2 435 (500-1 1/2)
CIRCLING	460-1	455 (500-1)	460-1 1/2 455 (500-1 1/2)	580-2 575 (600-2)

MARATHON, FLORIDA
Amdt 1 09183

MARATHON / THE FLORIDA KEYS MARATHON (MTH)
24°44'N - 81°03'W
RNAV (GPS) RWY 25