

MARATHON, FLORIDA

AL-6394 (FAA)

NDB-A

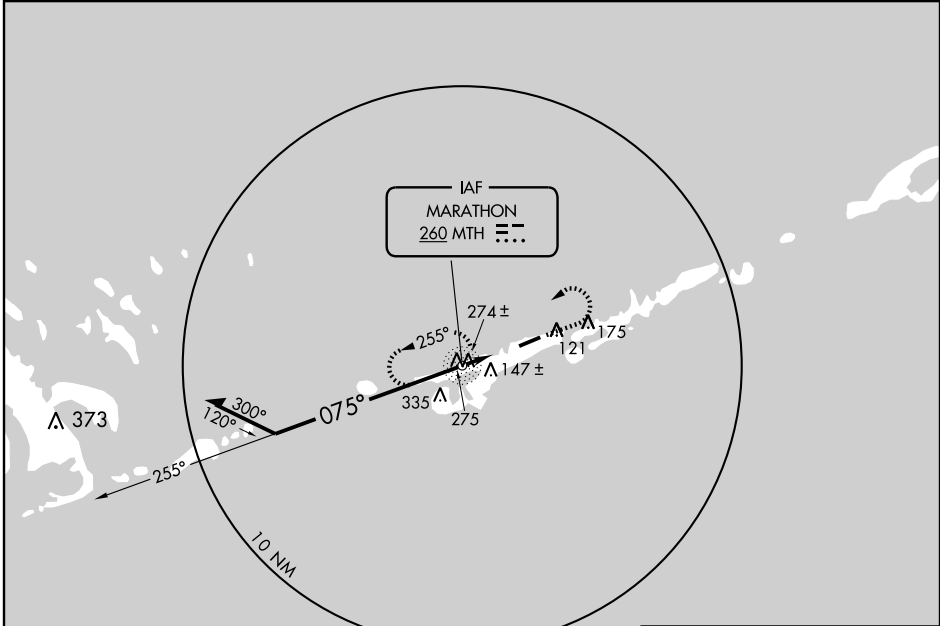
MARATHON/THE FLORIDA KEYS MARATHON (MTH)

NDB MTH <b>260</b>	APP CRS <b>075°</b>	Rwy Idg TDZE Apt Elev	<b>N/A</b> <b>N/A</b> <b>5</b>
-----------------------	------------------------	-----------------------------	--------------------------------------

▼ Visibility reduction by helicopters NA.  
▲ When local altimeter setting not received, use Key West Intl altimeter setting and increase all MDAs 100 feet and Cat D visibility ¼ mile.

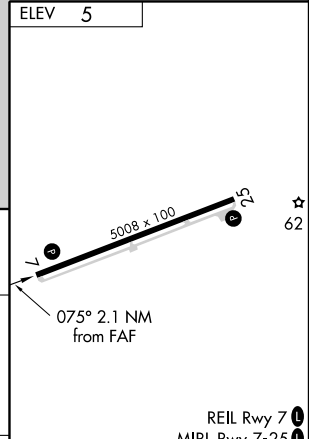
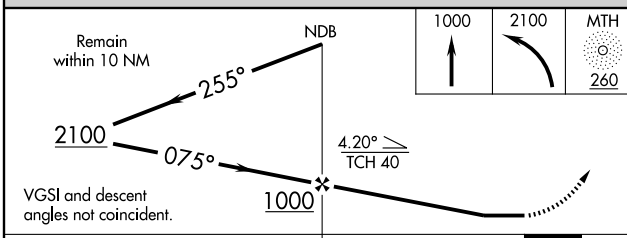
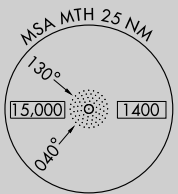
MISSED APPROACH: Climb to 1000 then climbing left turn to 2100 direct MTH NDB and hold.

ASOS <b>135.525</b>	MIAMI CENTER <b>133.5 306.9</b>	UNICOM <b>122.8 (CTAF) 0</b>
------------------------	------------------------------------	---------------------------------



SE-3, 22 OCT 2009 to 19 NOV 2009

SE-3, 22 OCT 2009 to 19 NOV 2009



CATEGORY	A	B	C	D	FAF to MAP 2.1 NM					
CIRCLING	460-1	455 (600-1)	460-1½ 455 (500-1½)	580-2 575 (600-2)	Knots	60	90	120	150	180
					Min:Sec	2:06	1:24	1:03	0:50	0:42

MARATHON, FLORIDA  
Orig 09183

MARATHON/THE FLORIDA KEYS MARATHON (MTH)  
24° 44'N-81° 03'W  
NDB-A