

# VOR or GPS-A

MOUNT OLIVE MUNI (W40)

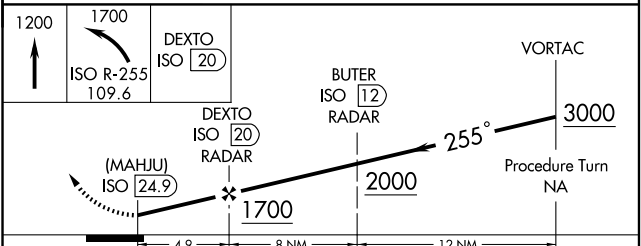
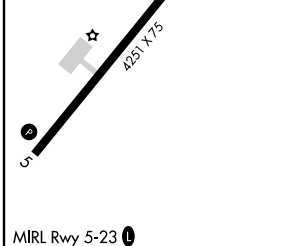
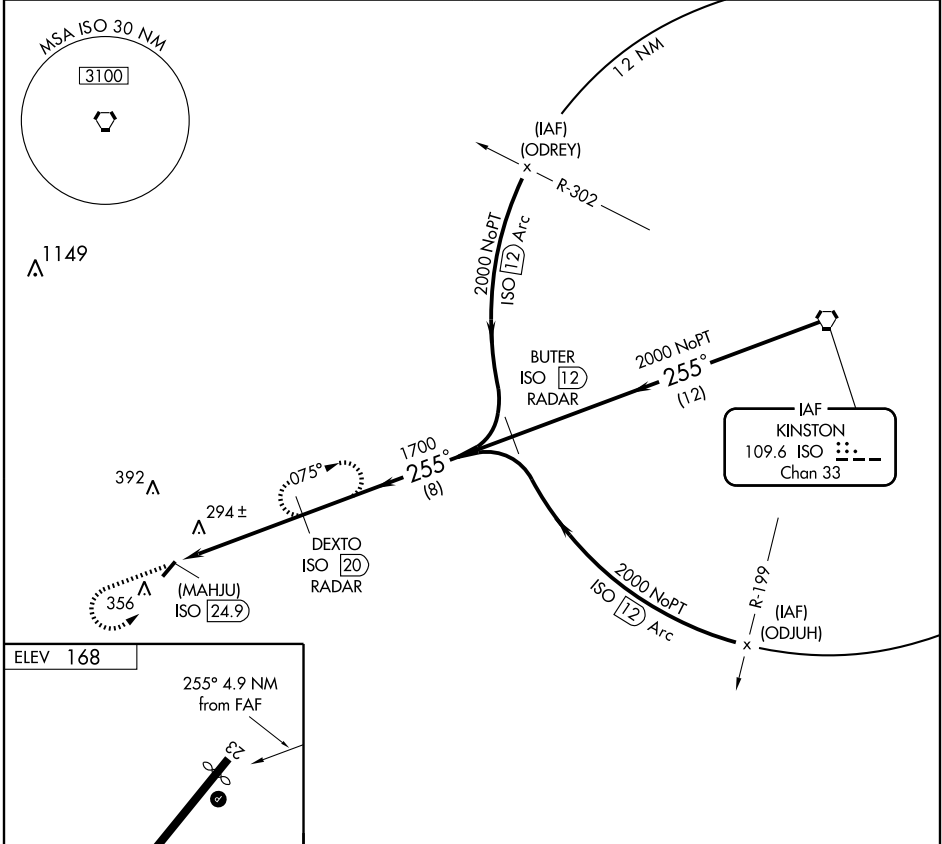
VORTAC ISO <b>109.6</b> Chan <b>33</b>	APP CRS <b>255°</b>	Rwy Idg TDZE Apt Elev	<b>N/A</b> <b>N/A</b> <b>168</b>
--	------------------------	-----------------------------	--

**NA** Use Seymour Johnson AFB altimeter setting. **RADAR OR DME REQUIRED**

**MISSED APPROACH:** Climb to 1200 then climbing left turn to 1700 via ISO R-255 to DEXTO/20 DME and hold.

SEYMOUR JOHNSON APP CON \* **119.7 273.6**

UNICOM **122.8 (CTAF)**



FAF to MAP 4.9 NM					
Knots	60	90	120	150	180
Min:Sec	4:54	3:16	2:27	1:58	1:38

CATEGORY	A	B	C	D
CIRCLING	700-1 532 (600-1)	700-1¼ 532 (600-1¼)	700-1½ 532 (600-1½)	NA

SE-2, 22 OCT 2009 to 19 NOV 2009

SE-2, 22 OCT 2009 to 19 NOV 2009