

RNAV (GPS) RWY 19

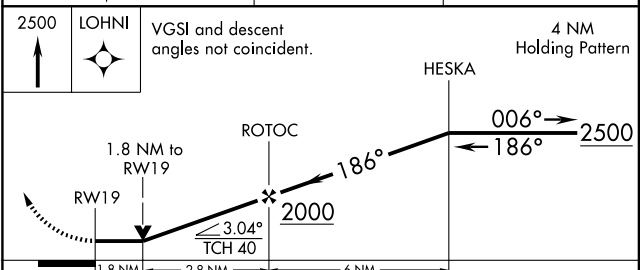
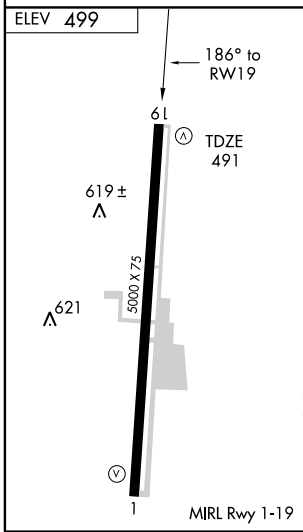
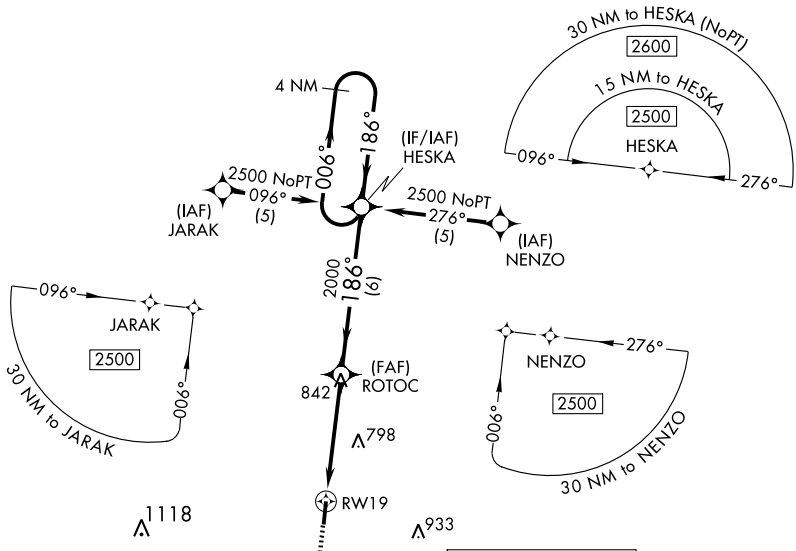
BOLIVAR / WILLIAM L. WHITEHURST FIELD (M08)

| | | |
|-------------|----------|-------------|
| APP CRS | Rwy Idg | 5000 |
| 186° | TDZE | 491 |
| | Apt Elev | 499 |

NA DME/DME RNP-0.3 NA. Visibility reduction by helicopters NA. When local altimeter setting not received, use Jackson altimeter setting and increase all MDA 80 feet, increase LNAV Cat C and D visibility ¼ mile, increase Circling Cat C visibility ¼ mile and Cat D visibility ½ mile. VDP NA when using Jackson altimeter setting.

MISSED APPROACH: Climb to 2500 direct LOHNI and hold.

| | | |
|--------------------------|---------------------------------------|-------------------------------|
| AWOS-3 121.125 | MEMPHIS CENTER 124.35 239.3 | UNICOM 123.0 (CTAF) |
|--------------------------|---------------------------------------|-------------------------------|



| CATEGORY | A | B | C | D |
|----------|--------|-------------|-------------------------|-------------------------|
| LNAV MDA | 1080-1 | 589 (600-1) | 1080-1½ 589 (600-1½) | 1080-1¾ 589 (600-1¾) |
| CIRCLING | 1080-1 | 581 (600-1) | 1080-1½ 581 (600-1½) | 1160-2 661 (700-2) |

RNAV (GPS) RWY 19

SE-1, 22 OCT 2009 to 19 NOV 2009

SE-1, 22 OCT 2009 to 19 NOV 2009