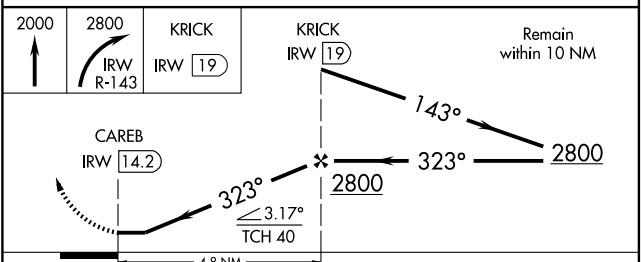
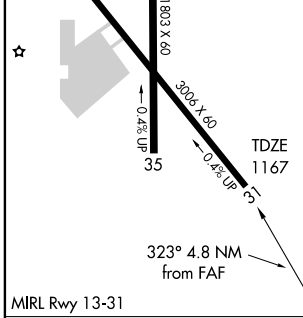
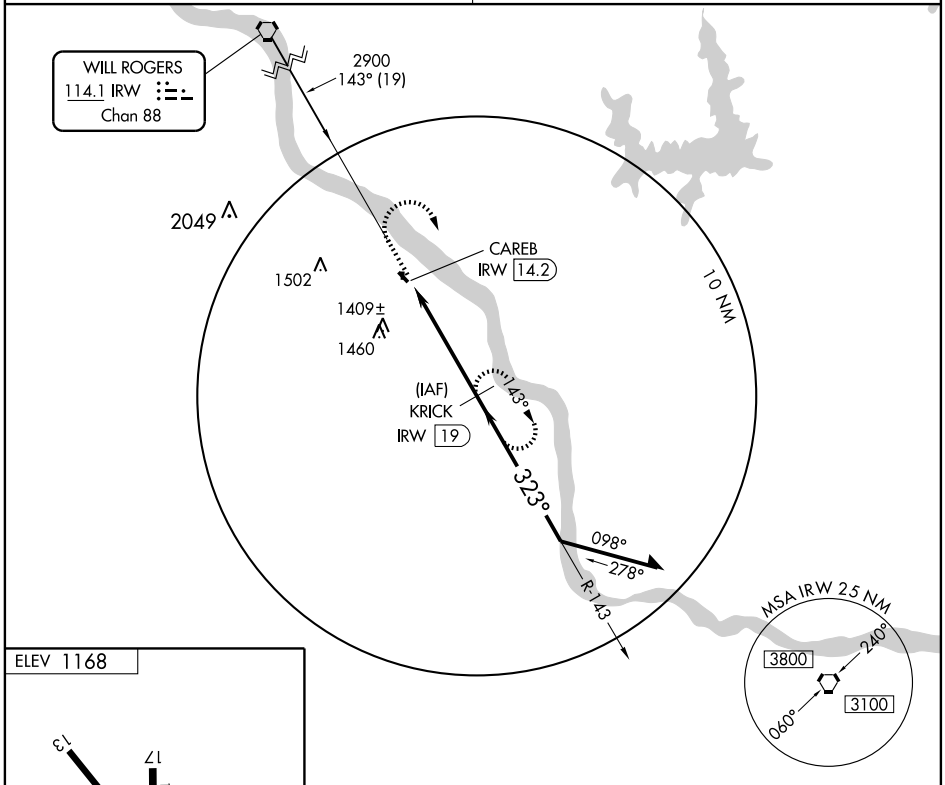


VORTAC IRW 114.1 Chan 88	APP CRS 323°	Rwy Idg 3006 TDZE 1167 Apt Elev 1168
--	------------------------	---

VOR/DME RWY 31
GOLDSBY/DAVID JAY PERRY (1K4)

<p>▼ Use Will Rogers World altimeter setting. ▲ NA</p>	<p>MISSED APPROACH: Climb to 2000, then climbing right turn to 2800 via IRW VORTAC R-143 to KRICK/19 DME and hold.</p>
<p>OKE CITY APP CON 120.45 288.325</p>	<p>UNICOM 122.7 (CTAF)</p>



CATEGORY	A	B	C	D
S-31	1780-1 613 (700-1)		1780-1¾ 613 (700-1¾)	NA
CIRCLING	1780-1 612 (700-1)		1780-1¾ 612 (700-1¾)	NA

SC-1, 22 OCT 2009 to 19 NOV 2009

SC-1, 22 OCT 2009 to 19 NOV 2009