

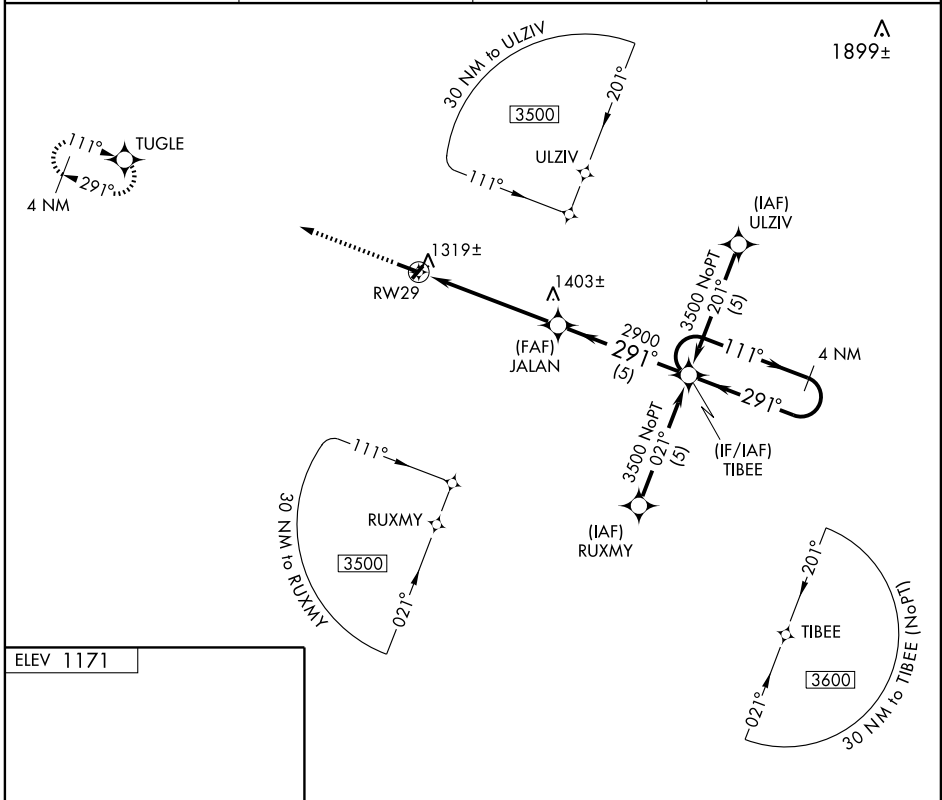
RNAV (GPS) RWY 29

MINERAL POINT/ IOWA COUNTY (MRJ)

APP CRS 291°	Rwy Idg 5000
	TDZE 1163
	Apt Elev 1171

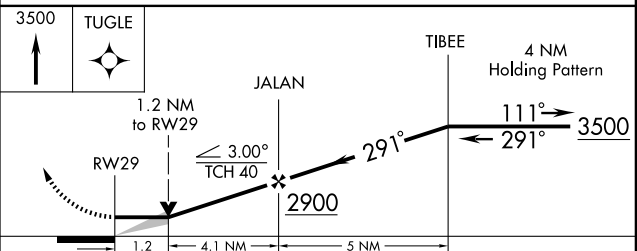
⚠ NA	GPS or RNP-0.3 Required. DME/DME RNP-0.3 NA.	MISSED APPROACH: Climb to 3500 direct TUGLE WP and hold.	
-------------	---	--	--

AWOS-3 118.525	CHICAGO CENTER 133.95 281.4	GCO 121.725	UNICOM 122.8 (CTAF) 0
--------------------------	---------------------------------------	-----------------------	---------------------------------



EC-3, 22 OCT 2009 to 19 NOV 2009

EC-3, 22 OCT 2009 to 19 NOV 2009



CATEGORY	A	B	C	D
LNAV MDA	1580-1	417 (500-1)	1580-1¼ 417 (500-1¼)	NA
CIRCLING	1620-1 449 (500-1)	1640-1 469 (500-1)	1640-1½ 469 (500-1½)	NA