

BUCYRUS, OHIO

AL-6388 (FAA)

VOR BUD 109.8	APP CRS 208°	Rwy Idg TDZE Apt Elev	3895 1008 1008
-------------------------	------------------------	-----------------------------	---

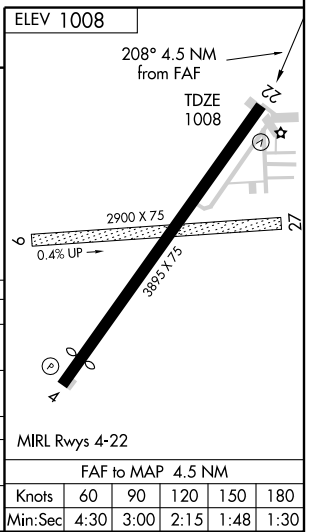
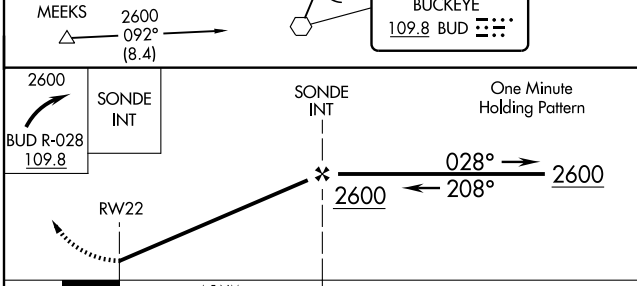
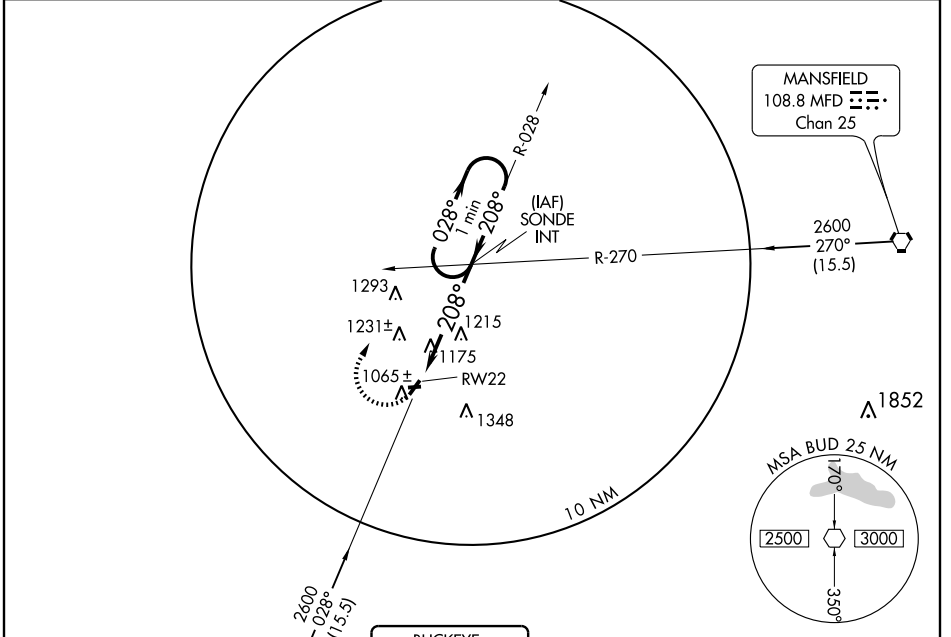
VOR or GPS RWY 22

BUCYRUS / PORT BUCYRUS-CRAWFORD COUNTY (17G)

▼ Use Mansfield altimeter setting; when not available, use Findlay altimeter setting.

▲ NA MISSED APPROACH: Climbing right turn to 2600 via BUD R-028 to SONDE Int and hold.

AWOS-3 126.625	MANSFIELD APP CON * 124.2 390.8	UNICOM 122.8 (CTAF)
--------------------------	---	-------------------------------



CATEGORY	A	B	C	D
S-22	1620-1	612 (700-1)	1620-1¾ 612 (700-1¾)	NA
CIRCLING	1620-1	612 (700-1)	1620-1¾ 612 (700-1¾)	NA
FINDLAY ALTIMETER SETTING MINIMUMS				
S-22	1640-1	632 (700-1)	1640-1¾ 632 (700-1¾)	NA
CIRCLING	1640-1	632 (700-1)	1640-1¾ 632 (700-1¾)	NA

BUCYRUS, OHIO
Amdt 4 09295

BUCYRUS / PORT BUCYRUS-CRAWFORD COUNTY (17G)
40°47'N - 82°58'W

VOR or GPS RWY 22

EC-2, 22 OCT 2009 to 19 NOV 2009

EC-2, 22 OCT 2009 to 19 NOV 2009