

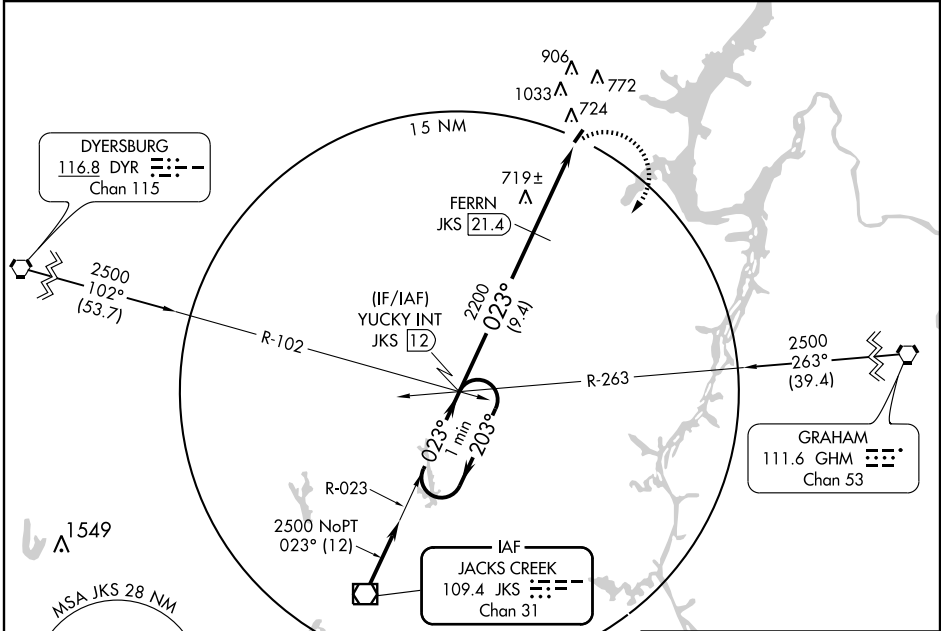
VOR/DME RWY 4
CAMDEN/ BENTON COUNTY (M4)

VOR/DME JKS 109.4 Chan 31	APP CRS 023°	Rwy Idg TDZE 468 Apt Elev 468	5001
---	------------------------	---	-------------

NA Visibility reduction by helicopters NA. Use Beech River Rgnl altimeter setting; when not received use Jackson altimeter setting and increase all MDA 60 feet and S-4 Cat C visibility ¼ mile.

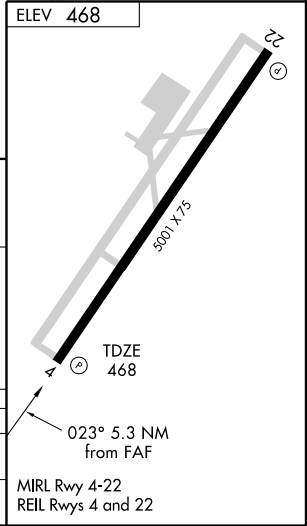
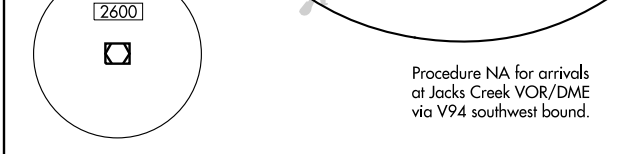
MISSED APPROACH: Climbing right turn to 2500 via JKS VOR/DME R-023 to YUCKY INT/JKS 12 DME and hold.

BEECH RIVER RGNL AWOS-3 118.125	MEMPHIS CENTER 125.85 379.25	UNICOM 122.8 (CTAF)
---	--	-------------------------------



SE-1, 22 OCT 2009 to 19 NOV 2009

SE-1, 22 OCT 2009 to 19 NOV 2009



VGSI and descent angles not coincident.

CATEGORY	A	B	C	D
S-4	1040-1 572 (600-1)	1040-1¼ 572 (600-1¼)	1040-1½ 572 (600-1½)	NA
CIRCLING	1140-1 672 (700-1)	1140-1¼ 672 (700-1¼)	1140-2 672 (700-2)	NA