

# RNAV (GPS) RWY 4

CAMDEN/ BENTON COUNTY (M)

|  |                        |                             |   |
|--|------------------------|-----------------------------|---|
| WAAS<br>CH <b>77814</b><br><b>W04A</b> | APP CRS<br><b>037°</b> | Rwy Idg<br>TDZE<br>Apt Elev | <b>5001</b><br><b>468</b><br><b>468</b> |
|--|------------------------|-----------------------------|---|

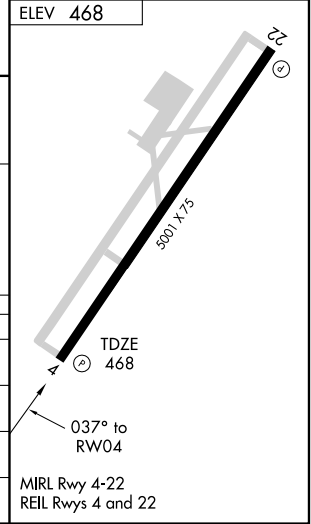
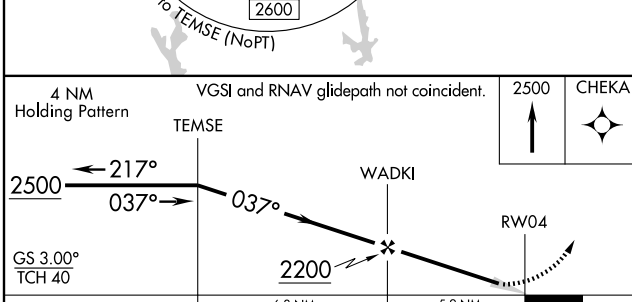
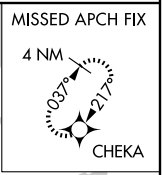
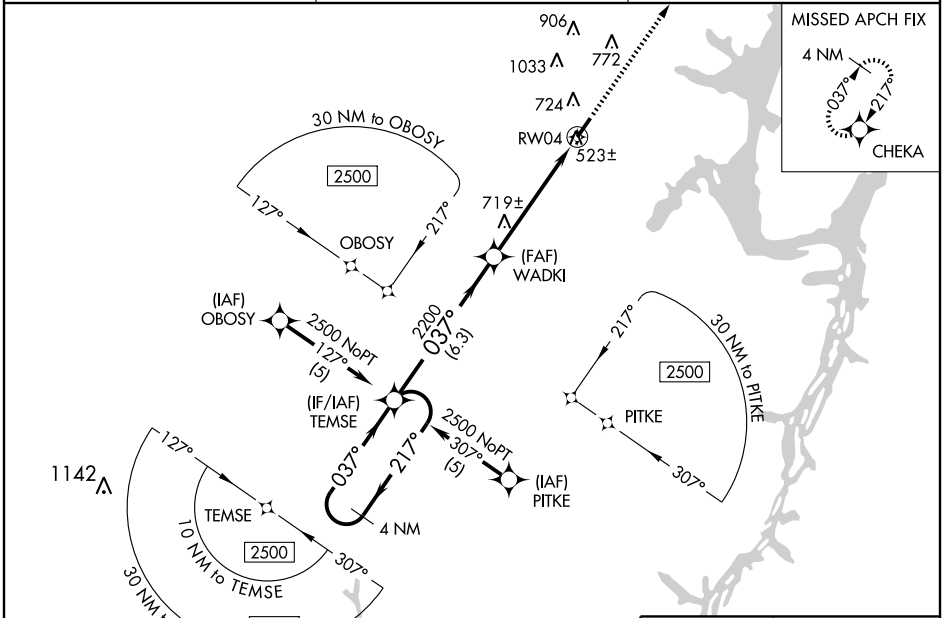
**Baro-VNAV NA. DME/DME RNP-0.3NA.**  
 Use Beech River Rgnl altimeter setting; when not received use Jackson altimeter setting and increase all DA 58 feet and all MDA 60 feet and increase LPV all Cats visibility ¼ mile, LNAV/VNAV all Cats visibility ¼ mile, and LNAV Cat C visibility ¼ mile.

**MISSED APPROACH:** Climb to 2500 direct CHEKA and hold.

BEECH RIVER RGNL AWOS-3  
**118.125**

MEMPHIS CENTER  
**125.85 379.25**

UNICOM  
**122.8 (CTAF)**



| CATEGORY     | A                   | B | C                    | D  |
|--------------|---------------------|---|----------------------|----|
| LPV DA       | 771-1 303 (400-1)   |   |                      | NA |
| LNAV/VNAV DA | 944-1¾ 476 (500-1¾) |   |                      | NA |
| LNAV MDA     | 1040-1 572 (600-1)  |   | 1040-1½ 572 (600-1½) | NA |
| CIRCLING     | 1140-1 672 (700-1)  |   | 1140-2 672 (700-2)   | NA |

SE-1, 22 OCT 2009 to 19 NOV 2009

SE-1, 22 OCT 2009 to 19 NOV 2009