

CAMDEN, TENNESSEE

AL-6386 (FAA)

RNAV (GPS) RWY 22

CAMDEN/ BENTON COUNTY (ØM4)

WAAS CH 82714 W22A	APP CRS 217°	Rwy Idg 5001 TDZE 465 Apt Elev 468
----------------------------------------	------------------------	---------------------------------------------------------------

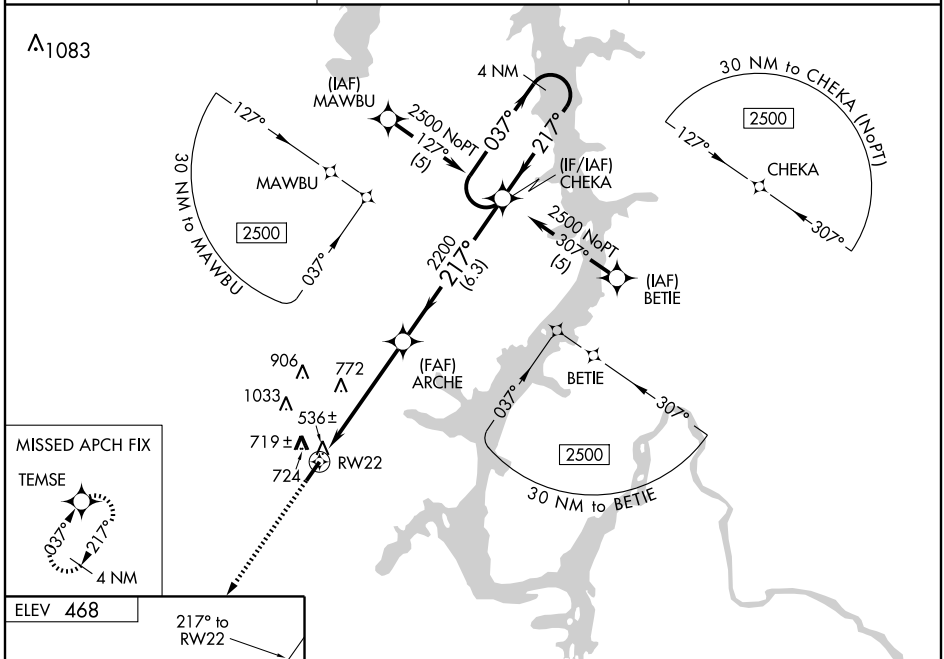
▼ Baro-VNAV NA. DME/DME RNP-0.3 NA.
 ▲ NA Visibility reduction by helicopters NA.
 ▲ NA Use Beech River Rgnl altimeter setting; when not received, use Jackson altimeter setting and increase all DA 58 feet and all MDA 60 feet and increase LPV all Cats visibility ¼ mile, LNAV/VNAV all Cats visibility ¼ mile, and LNAV Cat C visibility ¼ mile.

MISSED APPROACH: Climb to 2500 direct TEMSE and hold.

BEECH RIVER RGNL AWOS-3
118.125

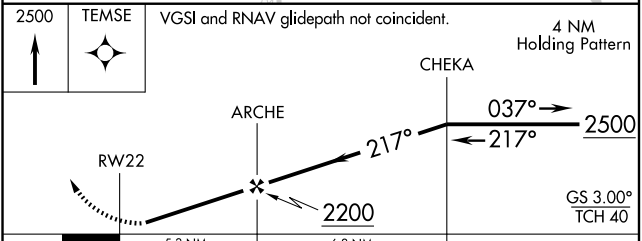
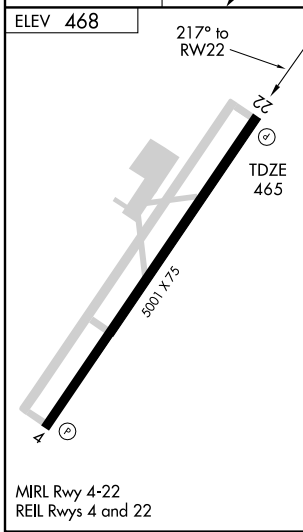
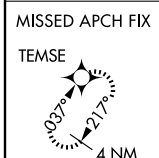
MEMPHIS CENTER
125.85 379.25

UNICOM
122.8 (CTAF)



SE-1, 22 OCT 2009 to 19 NOV 2009

SE-1, 22 OCT 2009 to 19 NOV 2009



CATEGORY	A	B	C	D
LPV DA	833-1¼	368 (400-1¼)		NA
LNAV/VNAV DA	980-1¾	515 (600-1¾)		NA
LNAV MDA	1080-1	615 (700-1)	1080-1¾ 615 (700-1¾)	NA
CIRCLING	1140-1	672 (700-1)	1140-2 672 (700-2)	NA

CAMDEN, TENNESSEE
 Orig 09239

36°01'N-88°07'W

RNAV (GPS) RWY 22