

RNAV (GPS) RWY 36

FULTON/ ELTON HENSLEY MEMORIAL (F'TT)

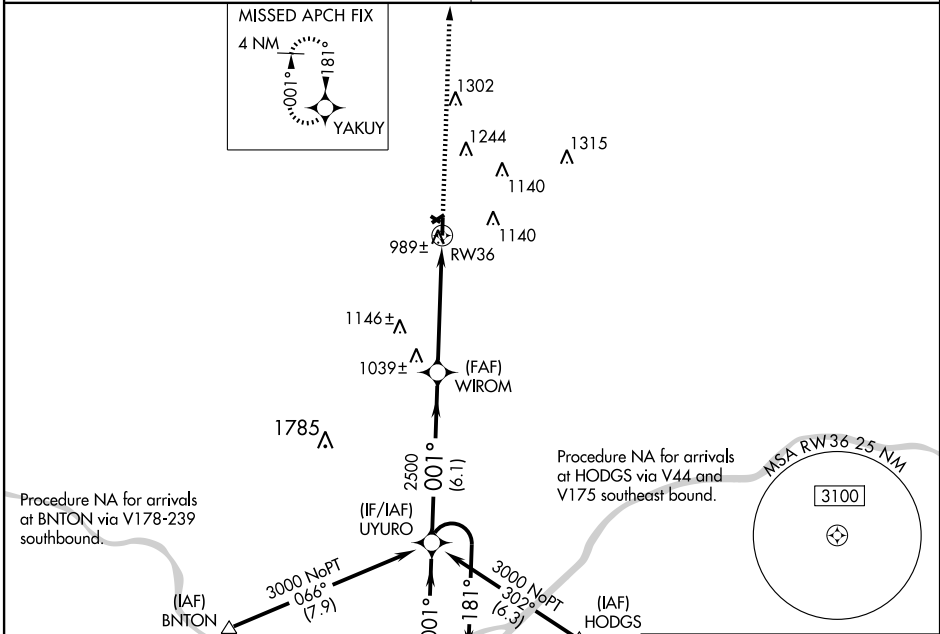
WAAS CH 86811 W36A	APP CRS 001°	Rwy Idg 4000 TDZE 881 Apt Elev 886
--	------------------------	---

NA Baro-VNAV NA. For uncompensated Baro-VNAV systems, LNAV/VNAV NA below -16°C (4°F) or above 54°C (130°F). DME/DME RNP-0.3 NA. Use Columbia altimeter setting; when not received, use Jefferson City altimeter setting and increase all DA 62 feet, all MDA 80 feet, increase LPV and LNAV/VNAV all Cats. and LNAV Cat. C visibility ¼ mile.

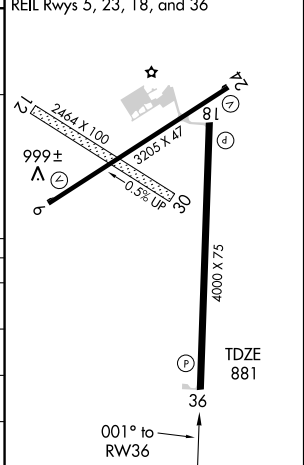
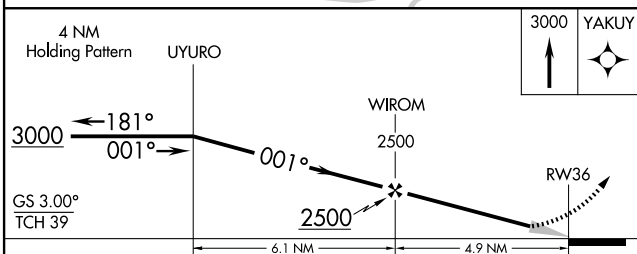
MISSED APPROACH: Climb to 3000 direct YAKUY and hold.

MIZU APP CON
124.375 353.7

UNICOM
122.7 (CTAF)



ELEV 886
MRL Rwy 5-23 and 18-36
REIL Rwy 5, 23, 18, and 36



CATEGORY	A	B	C	D
LPV DA	1155-1	274 (300-1)		NA
LNAV/VNAV DA	1283-1½	402 (400-1½)		NA
LNAV MDA	1280-1	399 (400-1)		NA
CIRCLING	1380-1	494 (500-1)	1380-1½ 494 (500-1½)	NA

RNAV (GPS) RWY 36

NC-3, 22 OCT 2009 to 19 NOV 2009

NC-3, 22 OCT 2009 to 19 NOV 2009