

RNAV (GPS) RWY 18

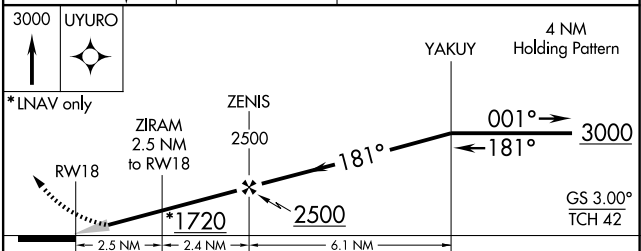
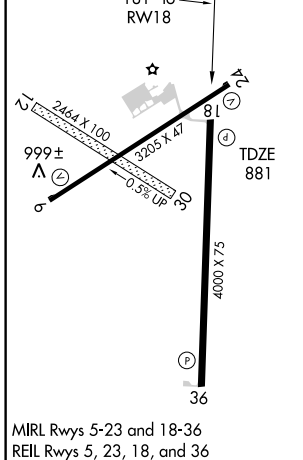
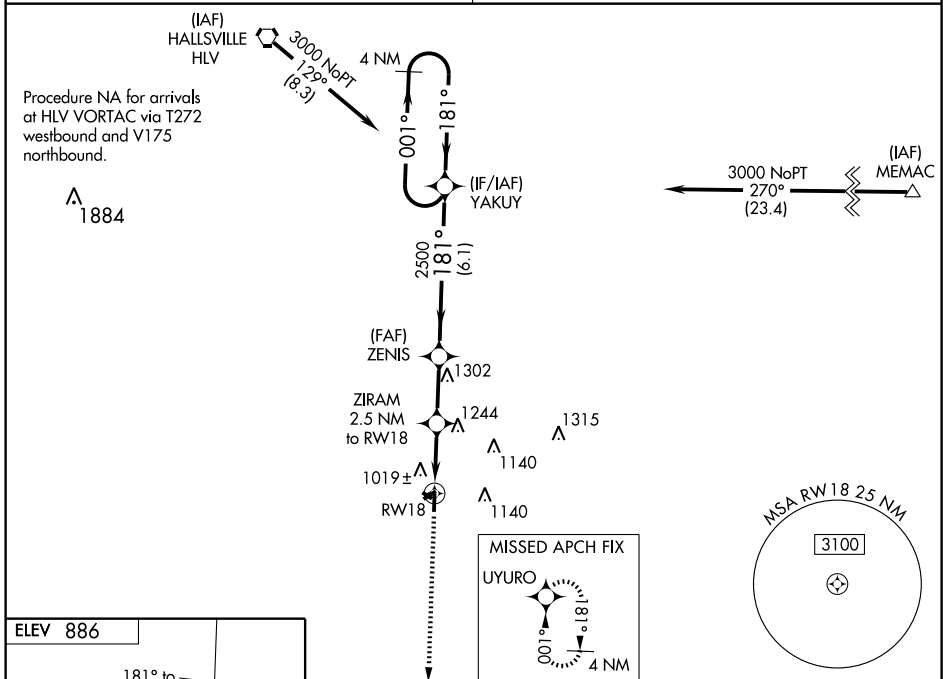
FULTON/ ELTON HENSLEY MEMORIAL (F'TT)

WAAS CH 42611 W18A	APP CRS 181°	Rwy Idg 4000 TDZE 881 Apt Elev 886
--	------------------------	---

NA
Baro-VNAV NA. For uncompensated Baro-VNAV systems, LNAV/VNAV NA below -1.6°C (4°F) or above 54°C (130°F). DME/DME RNP-0.3 NA.
Use Columbia altimeter setting; when not received, use Jefferson City altimeter setting and increase all DA 62 feet, all MDA 80 feet, increase LPV and LNAV/VNAV all Cats. visibility ¼ mile, LNAV and Circling Cat. C visibility ¼ mile.

MISSED APPROACH: Climb to 3000 direct UYURO and hold.

MIZU APP CON 124.375 353.7	UNICOM 122.7 (CTAF)
--------------------------------------	-------------------------------



CATEGORY	A	B	C	D
LPV DA	1155-1 274 (300-1)			NA
LNAV/VNAV DA	1313-1½ 432 (500-1½)			NA
LNAV MDA	1520-1	639 (700-1)	1520-1¾ 639 (700-1¾)	NA
CIRCLING	1520-1	634 (700-1)	1520-1¾ 634 (700-1¾)	NA

NC-3, 22 OCT 2009 to 19 NOV 2009

NC-3, 22 OCT 2009 to 19 NOV 2009