

BUFFALO, OKLAHOMA

AL-6384 (FAA)

NDB-A

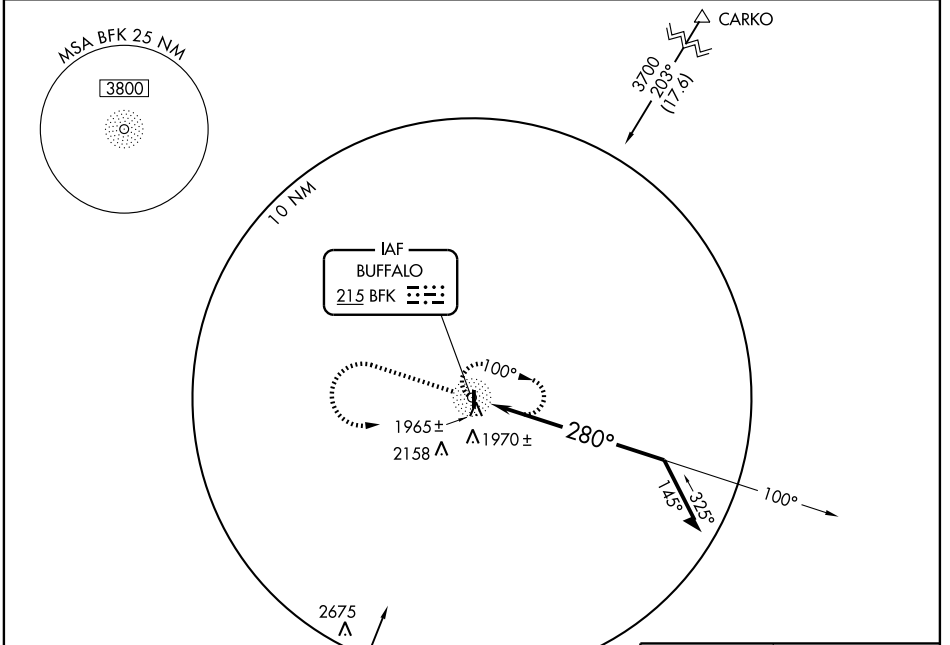
BUFFALO MUNI (BFK)

NDB BFK <b>215</b>	APP CRS <b>280°</b>	Rwy Idg TDZE Apt Elev	<b>N/A</b> <b>N/A</b> <b>1822</b>
-----------------------	------------------------	-----------------------------	---

**NA** Use Woodward/West Woodward altimeter setting; if not received, procedure not authorized.

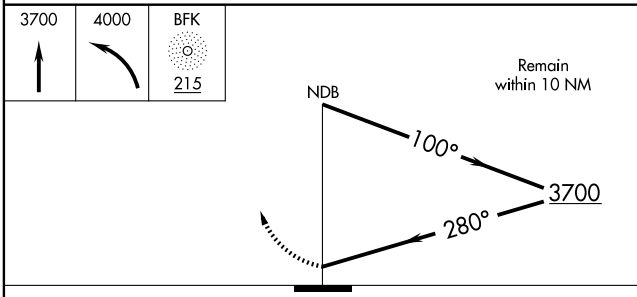
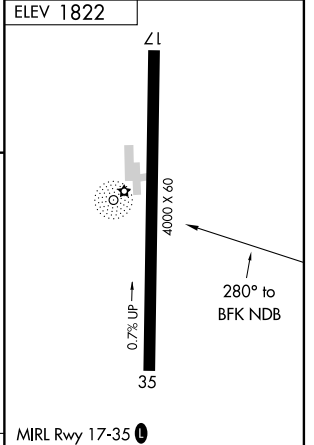
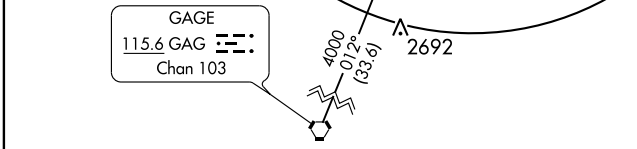
**MISSED APPROACH:** Climb to 3700 then left climbing turn to 4000 direct BFK NDB and hold.

AWOS-3 <b>118.425</b>	KANSAS CITY CENTER <b>126.95 379.2</b>	CTAF <b>122.9</b>
--------------------------	---	----------------------



SC-1, 22 OCT 2009 to 19 NOV 2009

SC-1, 22 OCT 2009 to 19 NOV 2009



CATEGORY	A	B	C	D
CIRCLING	2460-1	638 (700-1)	2460-1¼ 638 (700-1¼)	NA

ELEV 1822	4000 X 60	35	0.7% UP	280° to BFK NDB
MIRL Rwy 17-35				

BUFFALO, OKLAHOMA  
Amdt 2B 08269

36°52'N-99°37'W

BUFFALO MUNI (BFK)  
NDB-A