

RNAV (GPS) RWY 24

OLD BRIDGE (3N6)

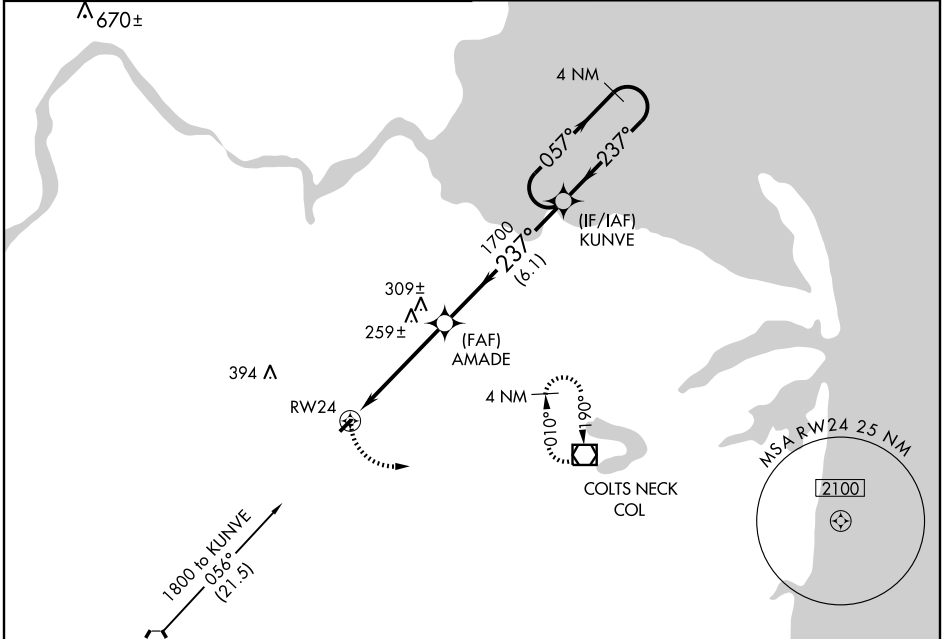
APP CRS	Rwy Idg	3194
237°	TDZE	87
	Apt Elev	87

▽ Circling NA at night. DME/DME RNP-0.3 NA. Procedure NA at night except by prior arrangement for runway lights. Visibility reduction by helicopters NA.
△ NA Use Belmar/Farmingdale altimeter setting; when not received, use Wrightstown altimeter setting and increase all MDA 20 feet.

MISSED APPROACH: Climbing left turn to 2000 direct COL VOR/DME and hold.

MC GUIRE APP CON
124.15 363.8

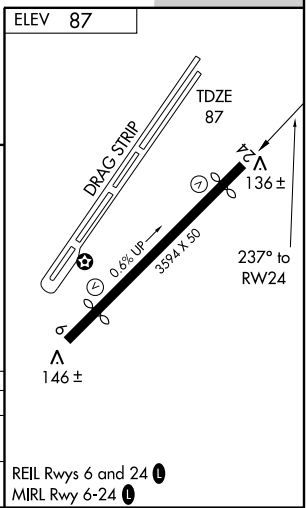
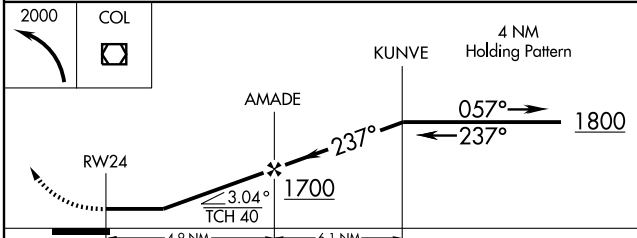
UNICOM
123.075 (CTAF) ①



NE-2, 22 OCT 2009 to 19 NOV 2009

NE-2, 22 OCT 2009 to 19 NOV 2009

Procedure NA for arrivals on RBV VORTAC
 airway radials 001 CW 054.



CATEGORY	A	B	C	D
LNAV MDA	560-1	473 (500-1)	NA	
CIRCLING	620-1 533 (600-1)	640-1 553 (600-1)	NA	

REIL Rwy 6 and 24 ①
 MIRL Rwy 6-24 ①