

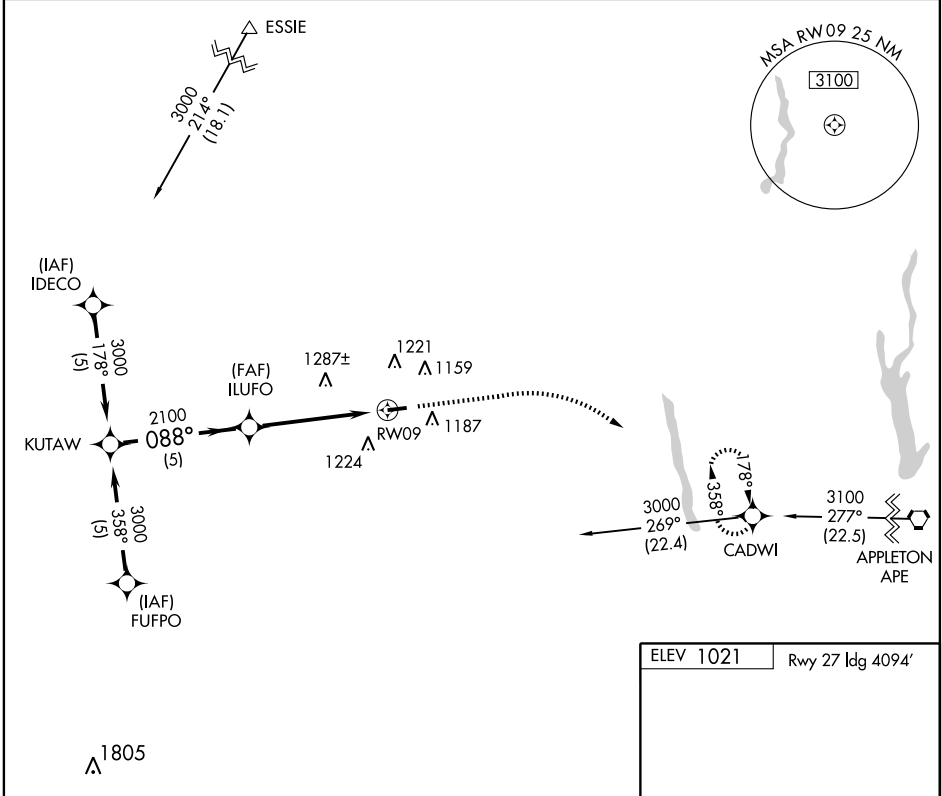
GPS RWY 9

MARYSVILLE / UNION COUNTY (MRT)

APP CRS	Rwy Idg	4218
088°	TDZE	1021
	Apt Elev	1021

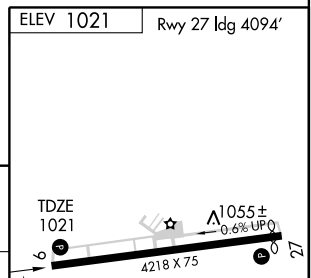
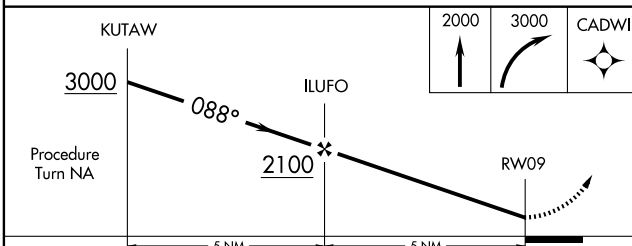
MISSED APPROACH: Climb to 2000, then climbing right turn to 3000 direct CADWI WP and hold.

AWOS-3 119.275	COLUMBUS APP CON 120.2 317.775	UNICOM 122.8 (CTAF) 0
--------------------------	--	--

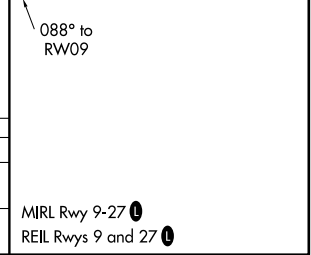


EC-2, 22 OCT 2009 to 19 NOV 2009

EC-2, 22 OCT 2009 to 19 NOV 2009



CATEGORY	A	B	C	D
S-9	1520-1	499 (500-1)	1520-1½ 499 (500-1½)	1520-1½ 499 (500-1½)
CIRCLING	1540-1	519 (600-1)	1560-1½ 539 (600-1½)	1580-2 559 (600-2)



GPS RWY 9