

VOR/DME or GPS-A

MC GEHEE MUNI (7M1)

VOR/DME MON 111.6 Chan 53	APP CRS 255°	Rwy ldg TDZE Apt Elev 141	N/A N/A
---	------------------------	--	--------------------------

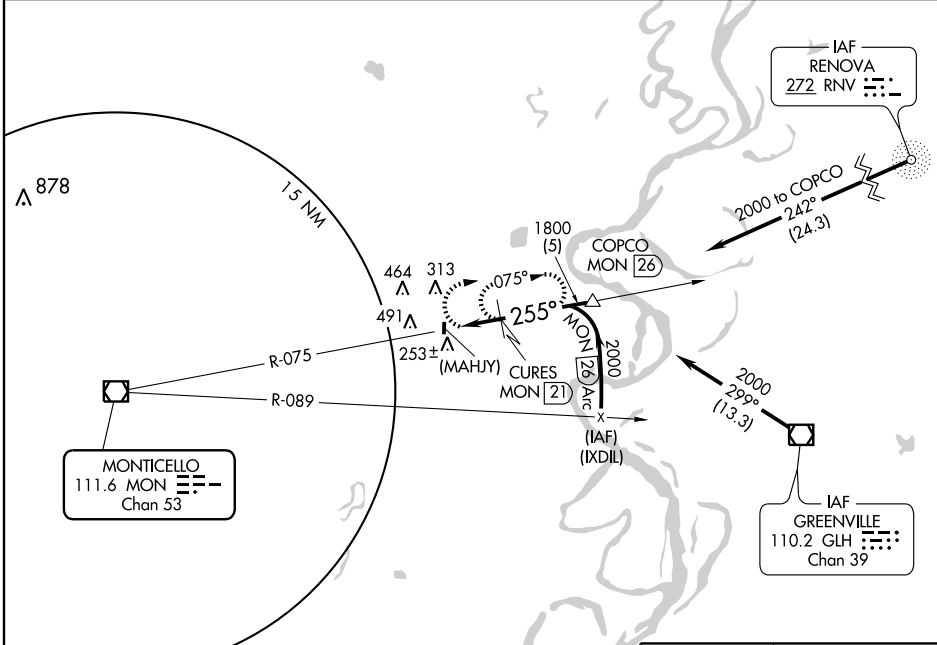
▲ NA Circling West of Rwy 18-36 not authorized.
Use Greenville, MS altimeter setting; when not available, use Greenwood, MS altimeter setting and increase all MDAs 220 feet.

MISSED APPROACH: Climbing right turn to 1800 via MON R-075 to CURES 21 DME and hold.

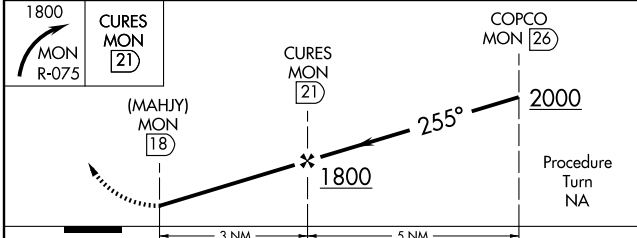
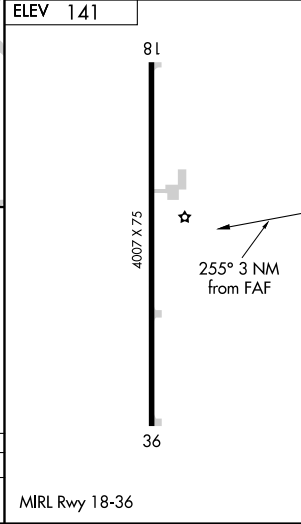
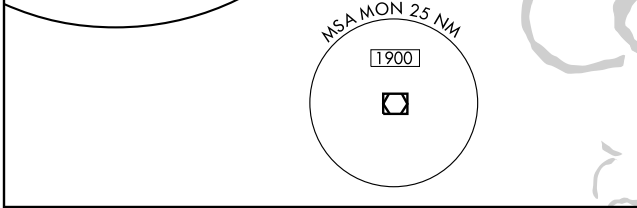
MEMPHIS CENTER
135.875 269.35

CTAF
122.9

SC-1, 22 OCT 2009 to 19 NOV 2009



SC-1, 22 OCT 2009 to 19 NOV 2009



CATEGORY	A	B	C	D
CIRCLING	800-1 659 (700-1)		800-1½ 659 (700-1½)	NA